

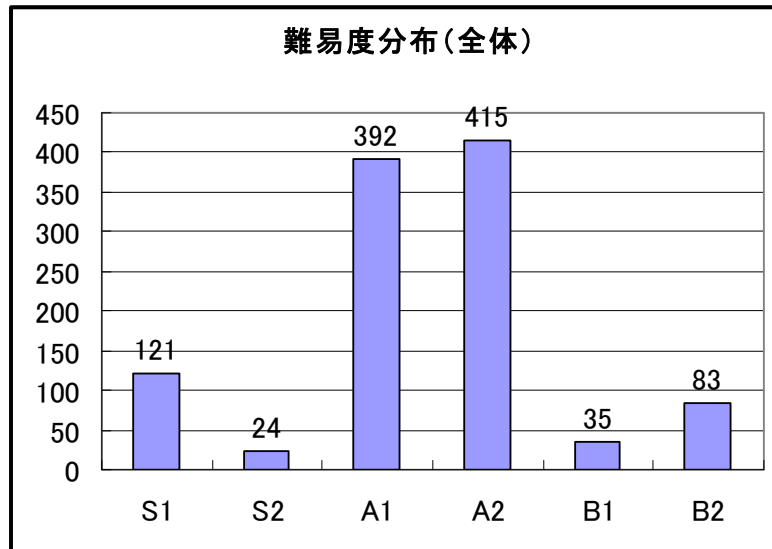
平成 18 年度

## 人事考課の考課結果

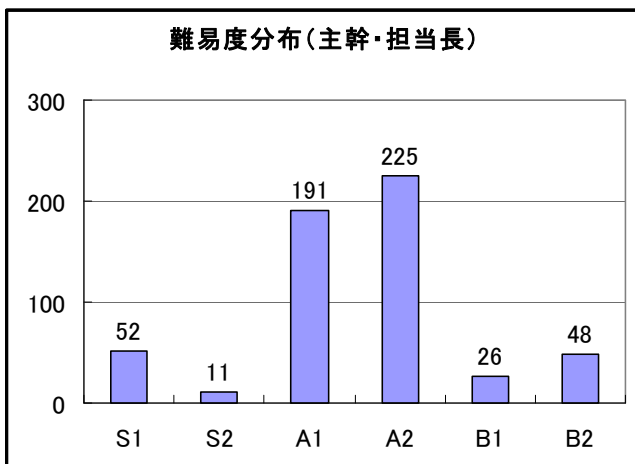
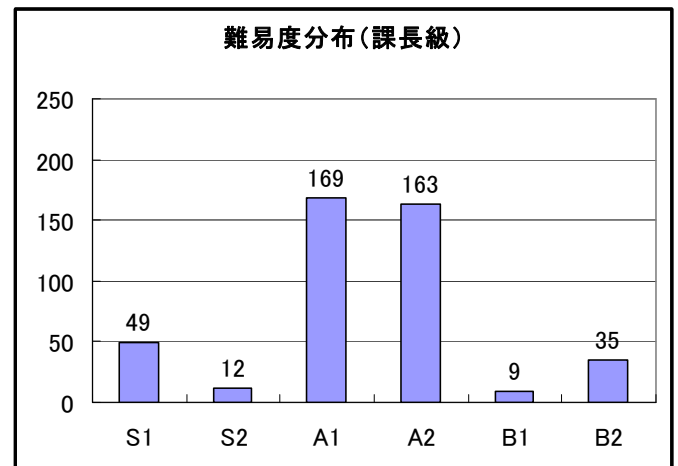
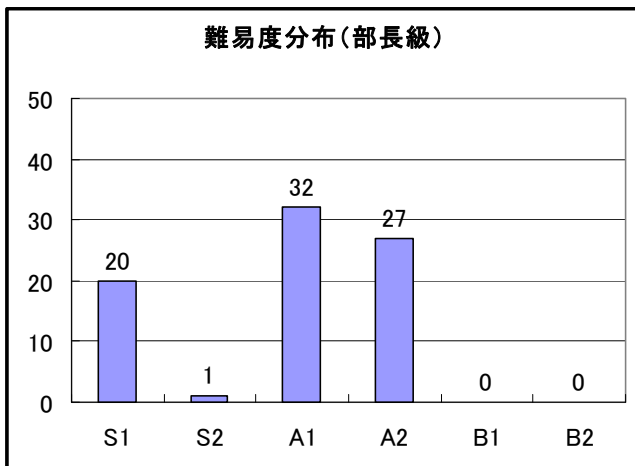
(内容)

	(ページ)
1. 実績考課 (目標管理) の結果	
実績考課 (目標管理) の難易度分布	1
部別の難易度分布	2
実績考課 (目標管理) の考課点分布	3
2. 能力考課の結果	
課長級職員的能力考課結果 (マネジメント・サポート含む)	4
担当長・主幹・担当長(主査)の能力考課結果	5
主査・一般職の能力考課結果	6

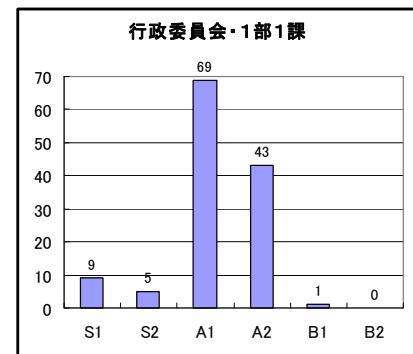
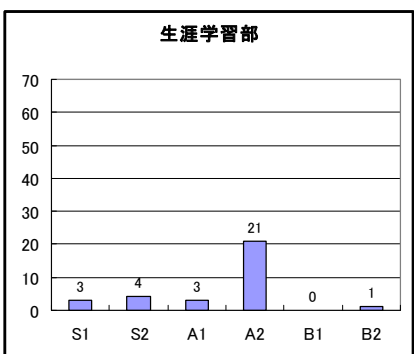
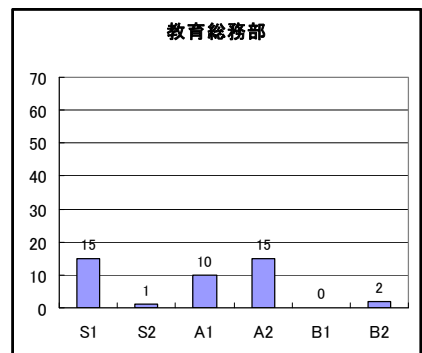
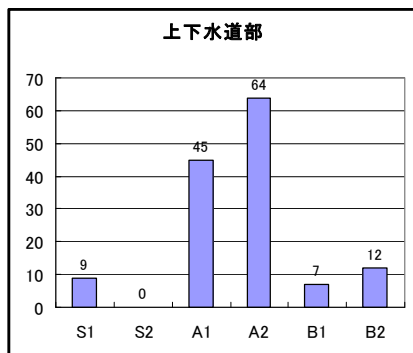
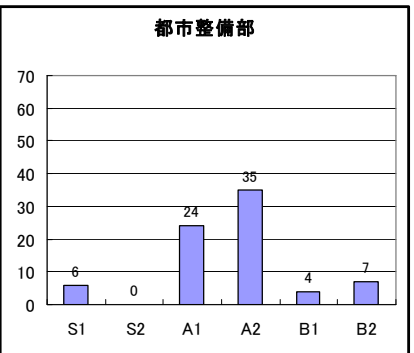
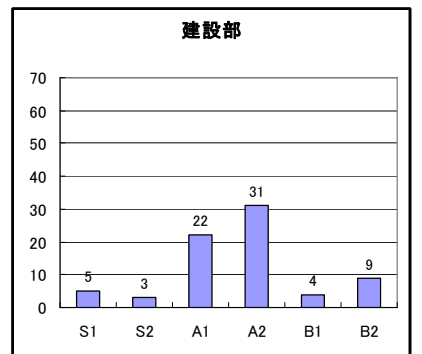
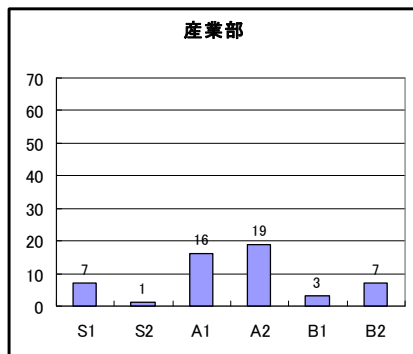
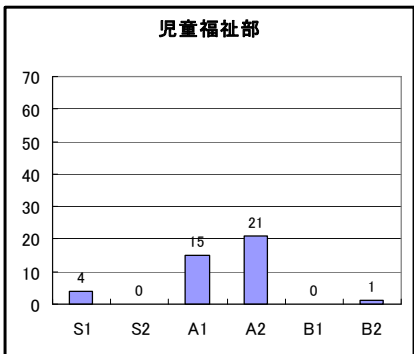
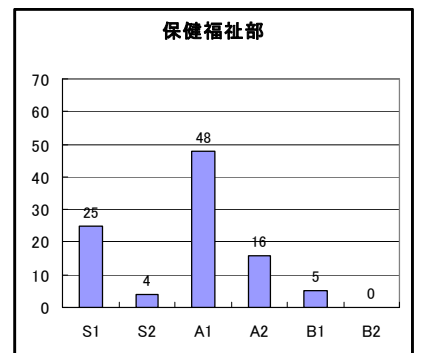
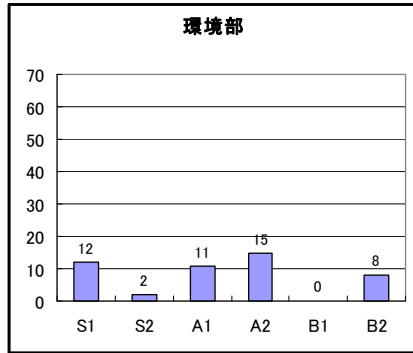
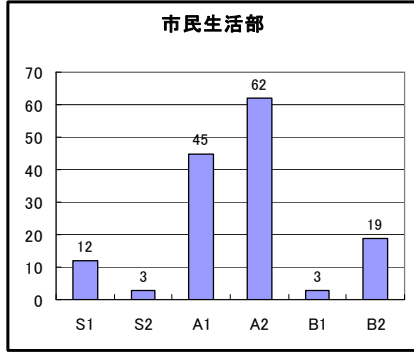
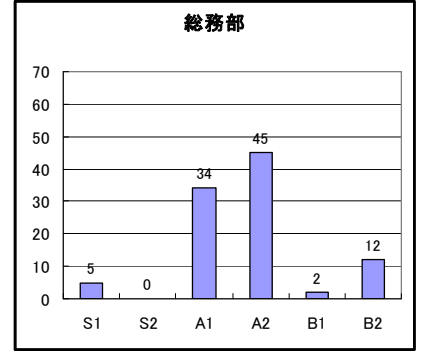
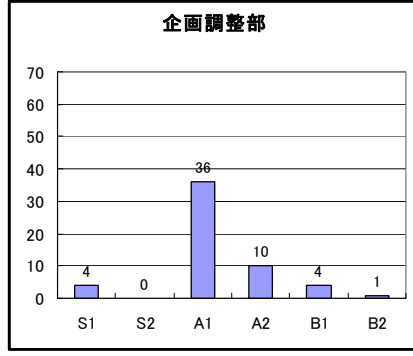
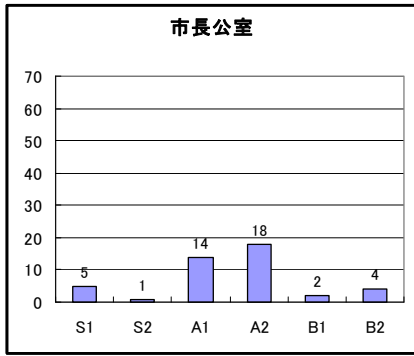
# 平成18年度 実績考課（目標管理）の難易度分布



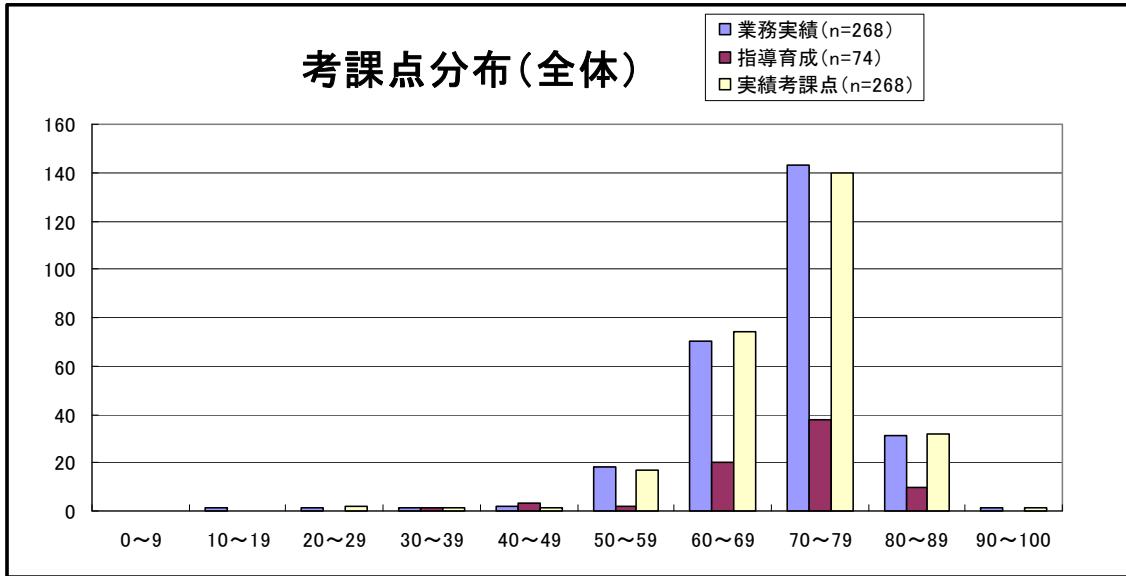
## 職階別の難易度分布



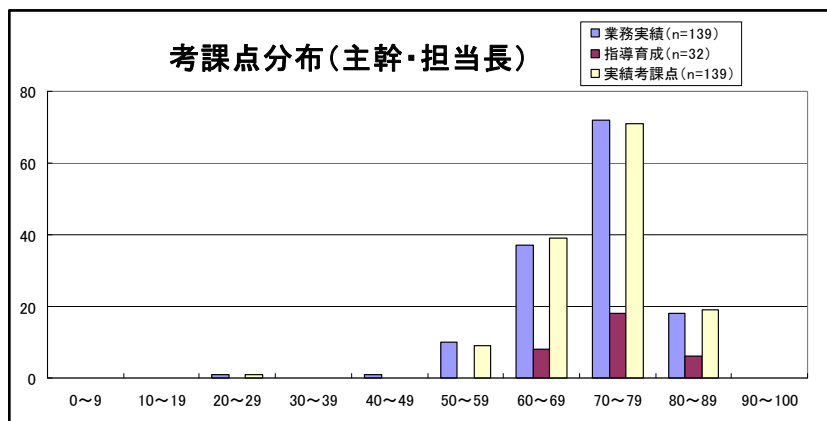
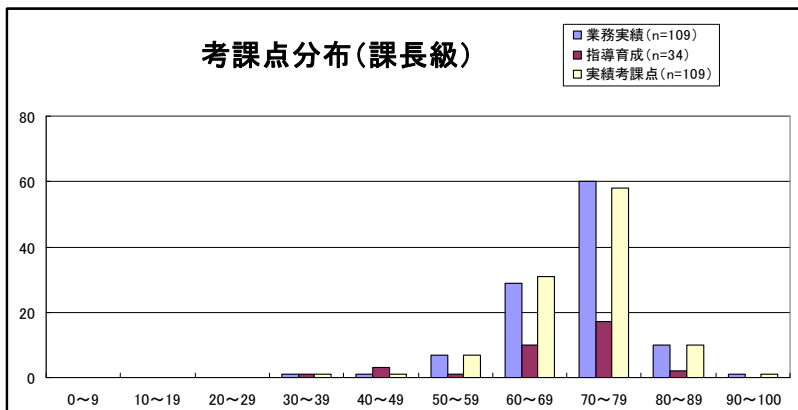
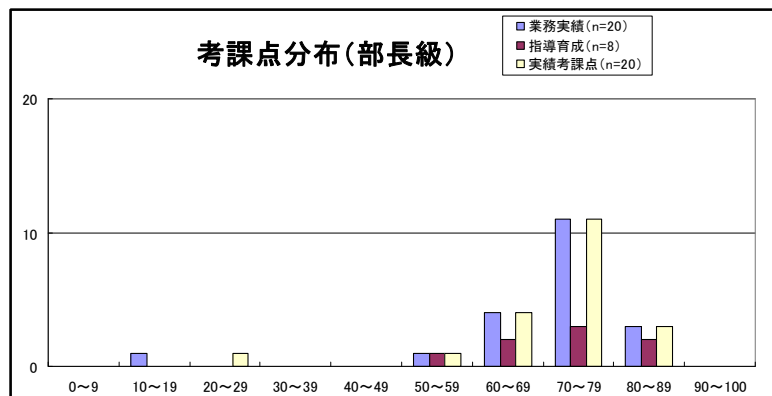
# 平成18年度 部別の難易度分布



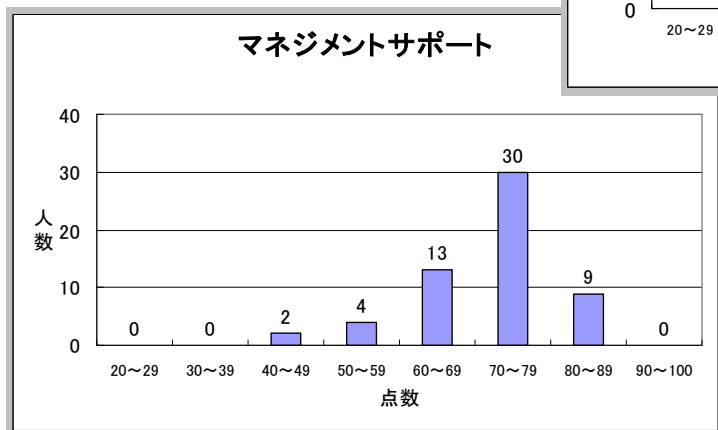
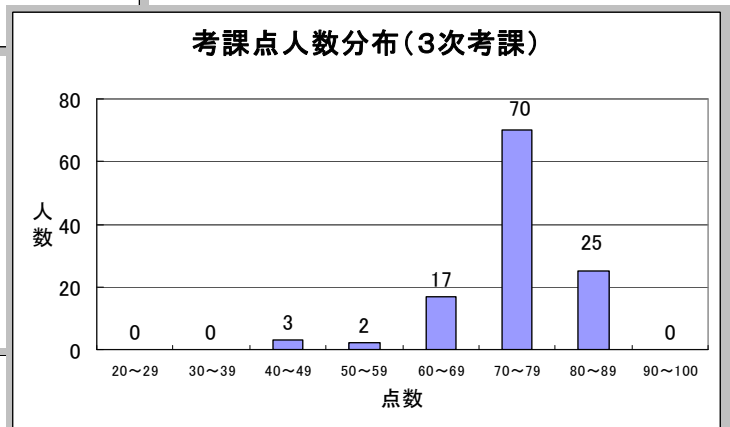
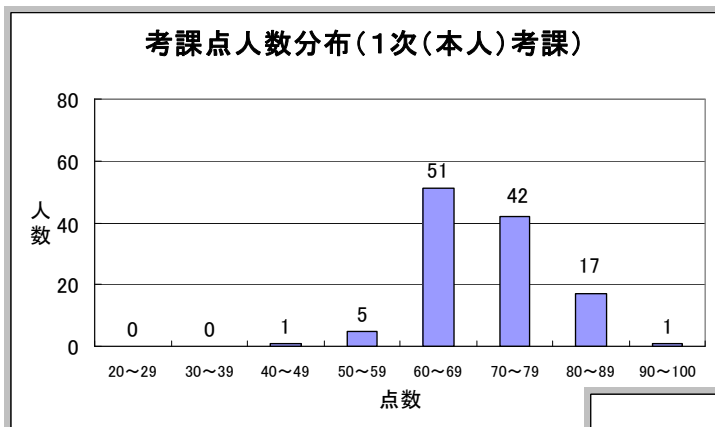
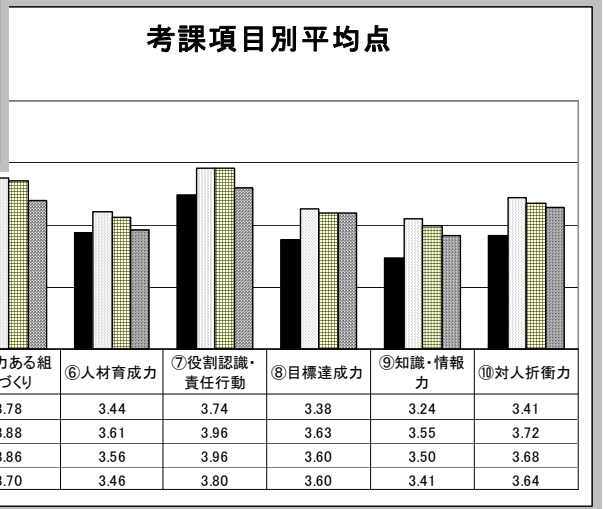
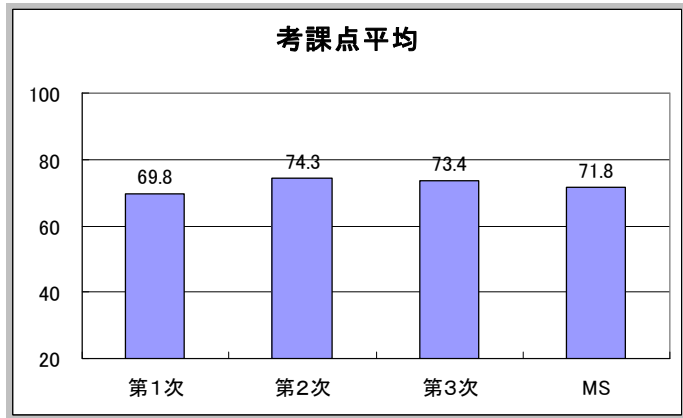
## 実績考課（目標管理）の考課点分布



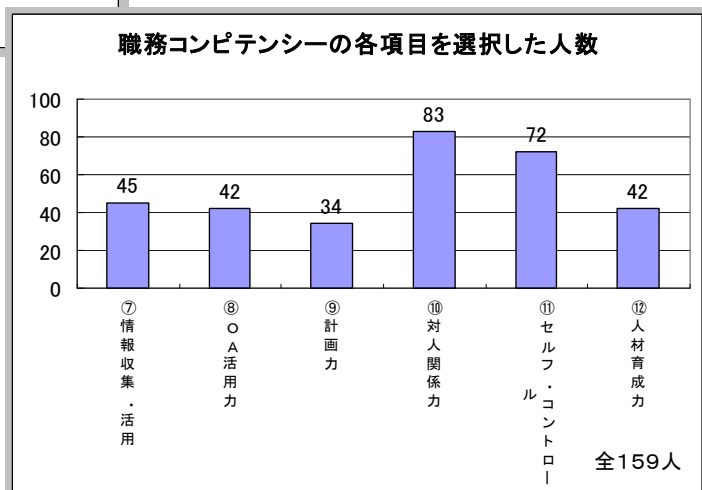
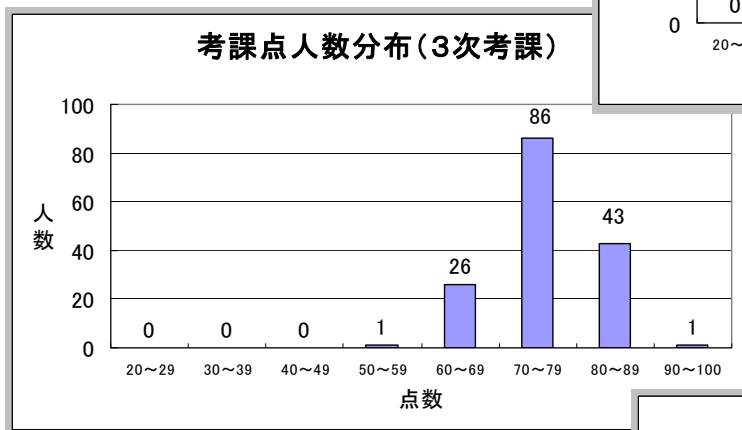
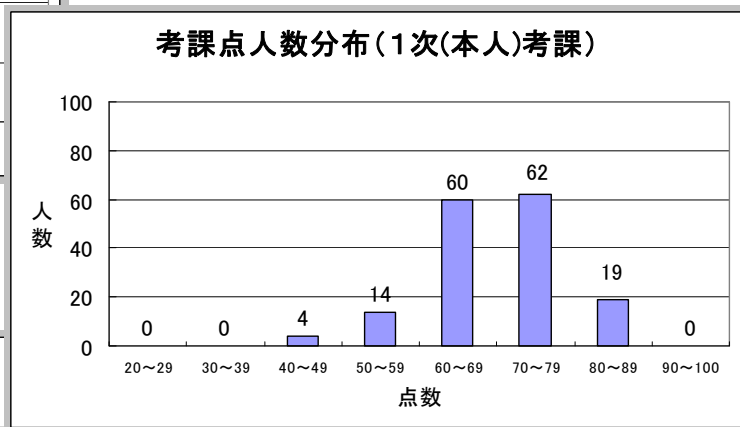
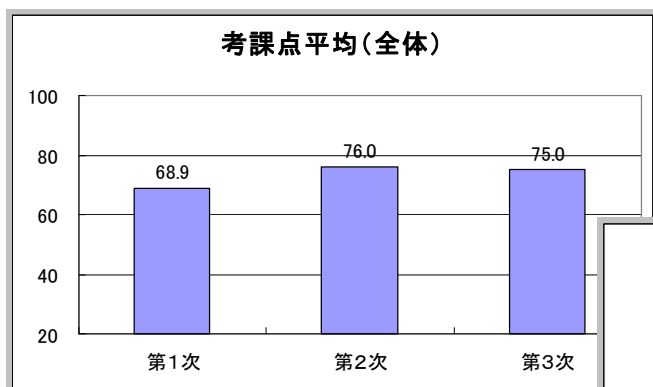
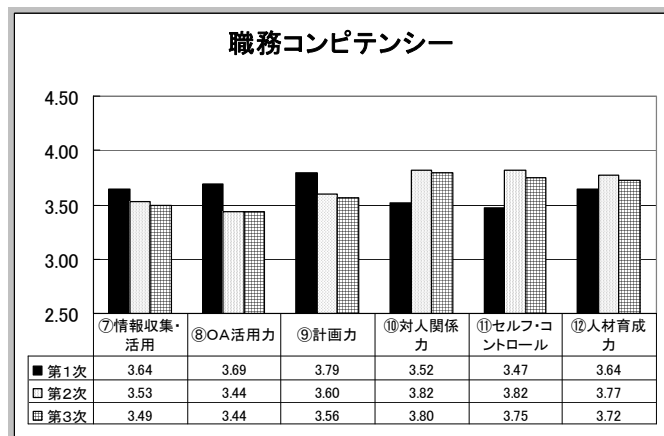
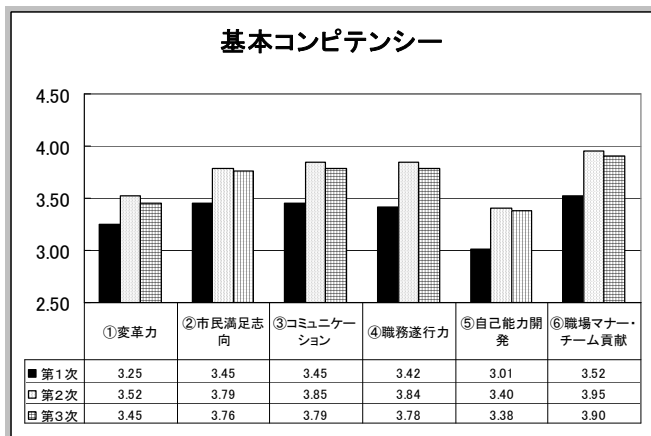
階級	区分	平均点
部長級	業務実績	69.85
	指導育成	70.23
	実績考課点	70.00
課長級	業務実績	70.93
	指導育成	67.18
	実績考課点	70.67
主幹・担当長	業務実績	70.99
	指導育成	72.88
	実績考課点	71.18



# 平成 18 年度 課長級職員の能力考課結果



# 平成18年度 担当長・主幹・担当長(主査)の能力考課結果



# 平成18年度 主査・一般職員の能力考課結果

