

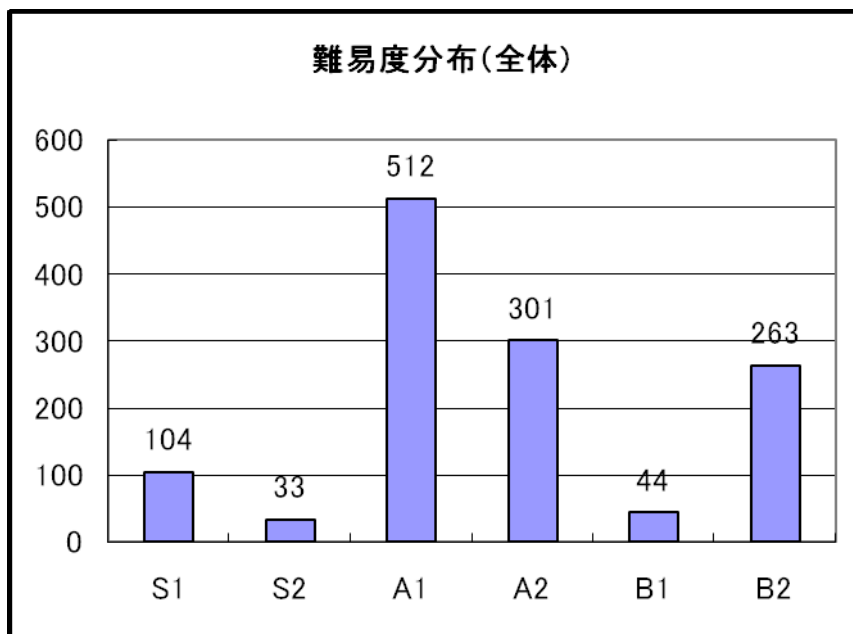
平成 22 年度

人事考課の考課結果

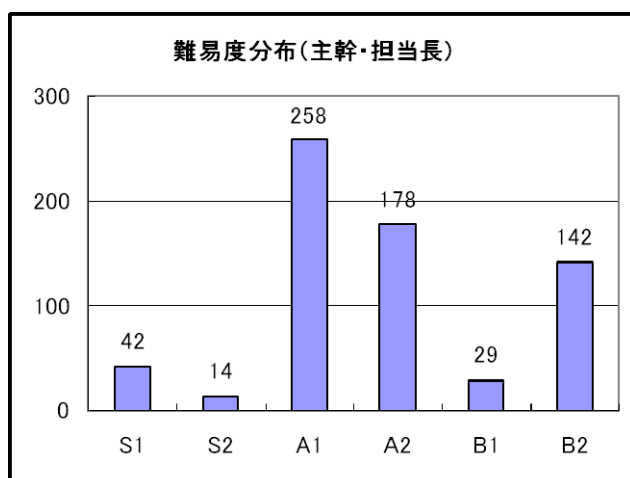
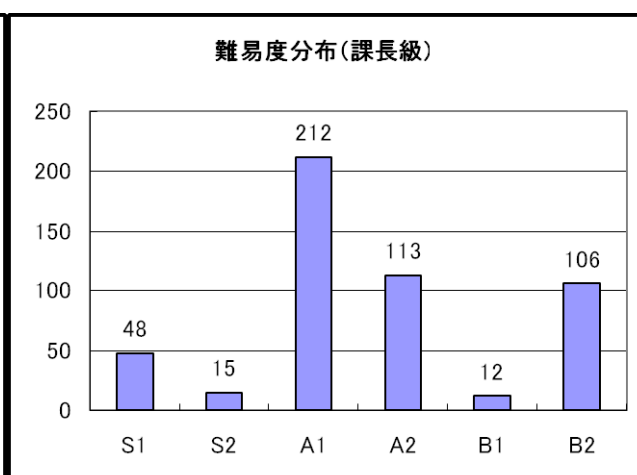
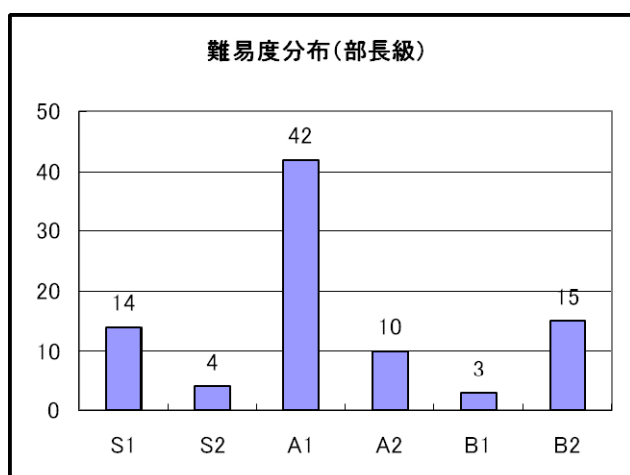
(内容)

	(ページ)
1. 実績考課 (目標管理) の結果	
実績考課 (目標管理) の難易度分布	1
部別の難易度分布	2
実績考課 (目標管理) の考課点分布	3
2. 能力考課の結果	
課長級職員的能力考課結果 (マネジメント・サポート含む)	4
担当長・主幹・担当長(主査)の能力考課結果	5
主査・一般職の能力考課結果	6

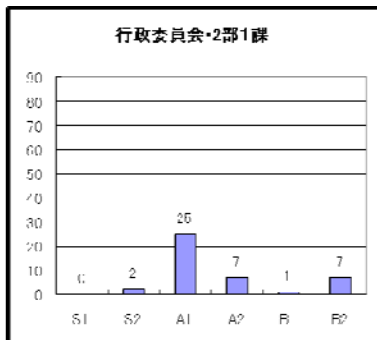
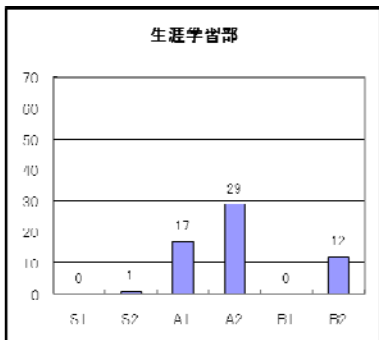
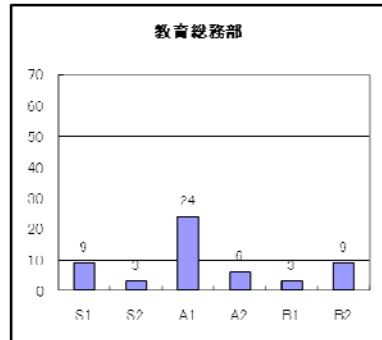
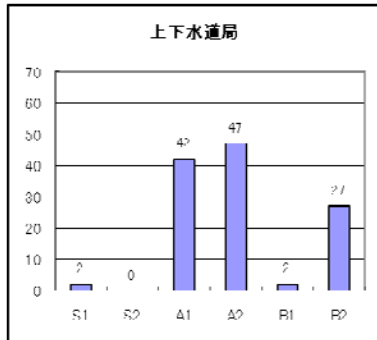
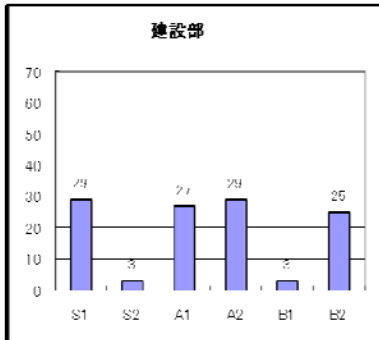
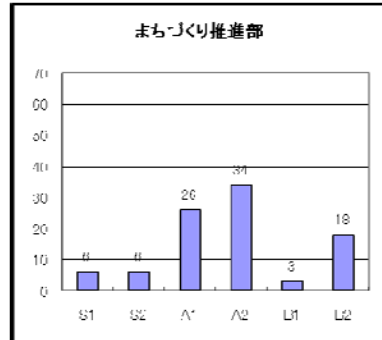
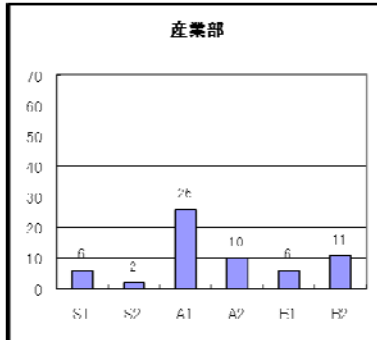
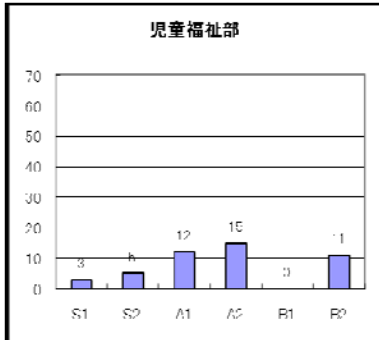
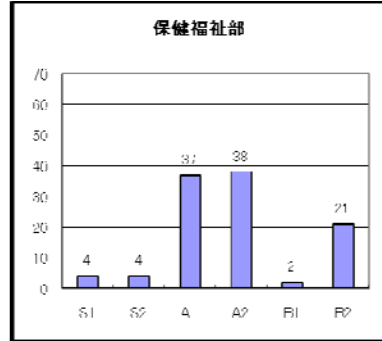
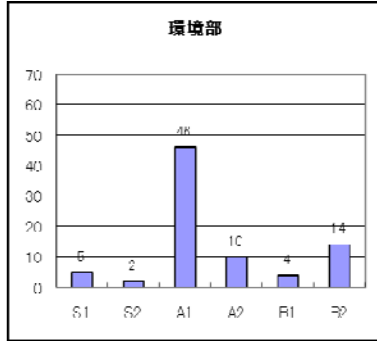
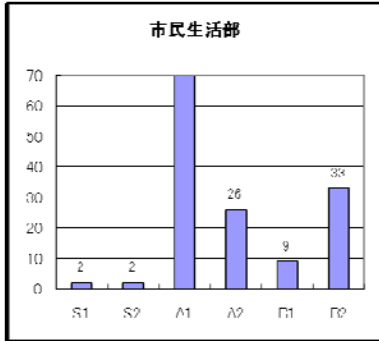
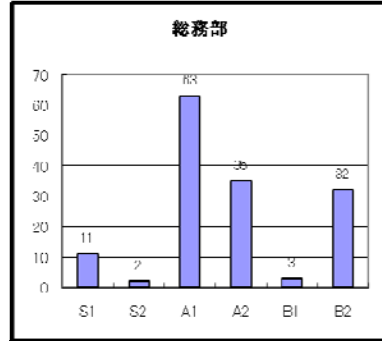
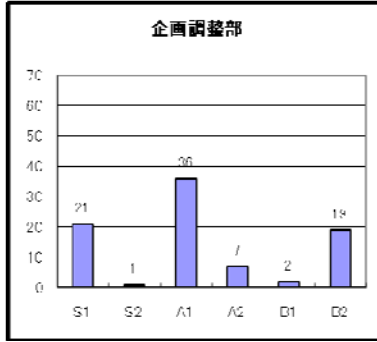
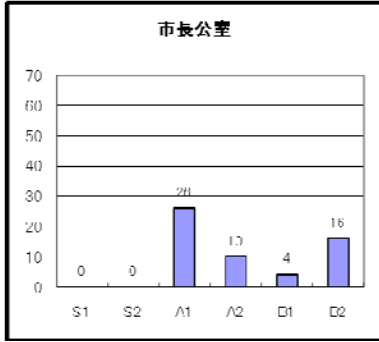
平成22年度 実績考課（目標管理）の難易度分布



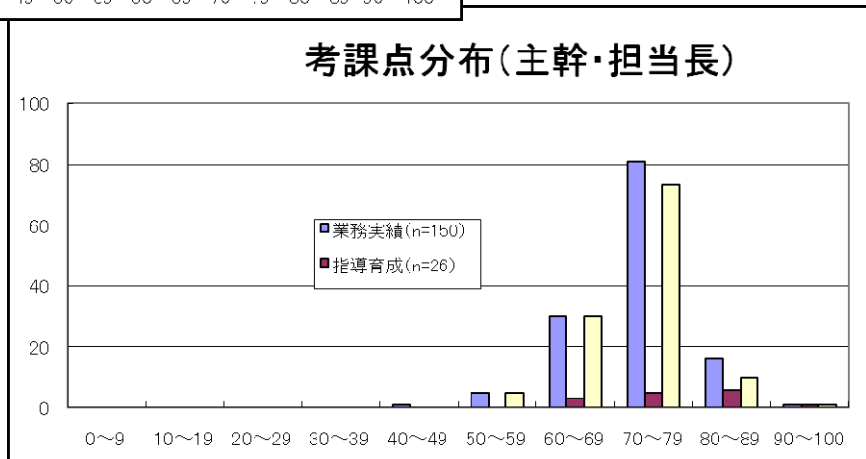
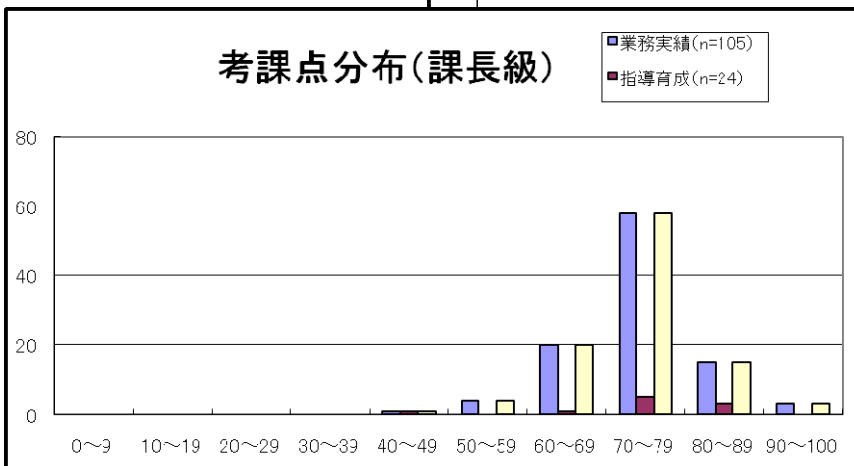
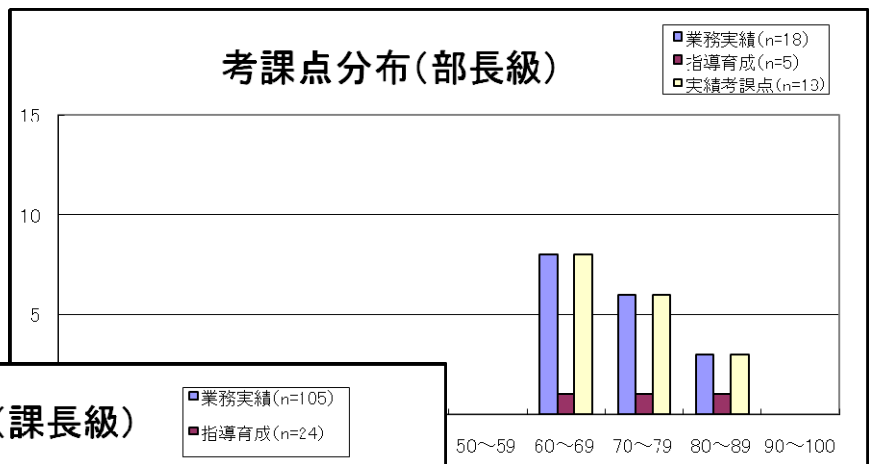
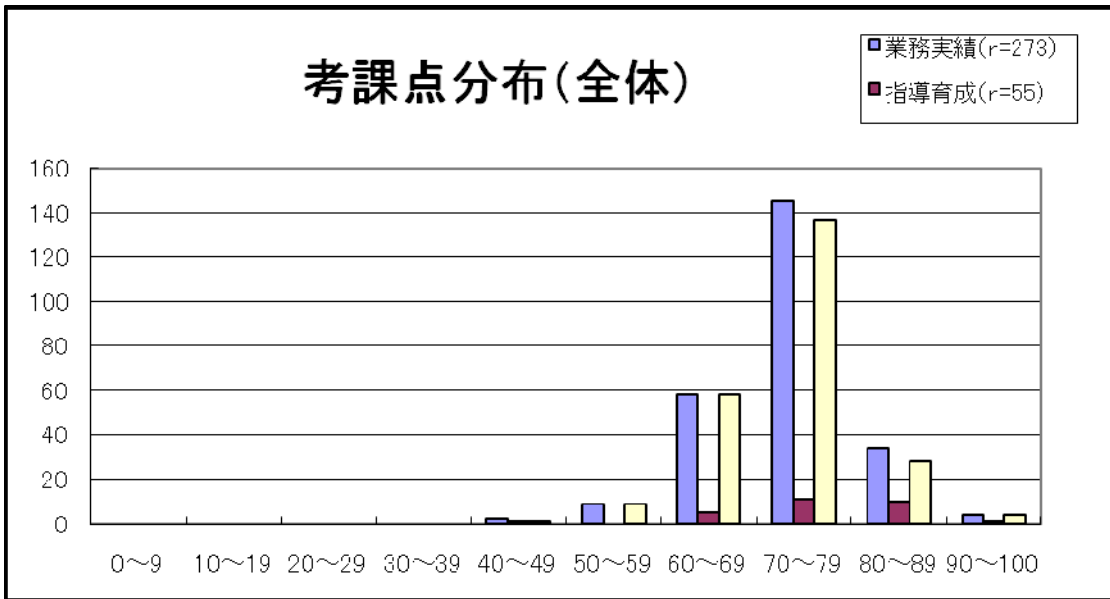
職階別の難易度分布



平成22年度 部別の難易度分布

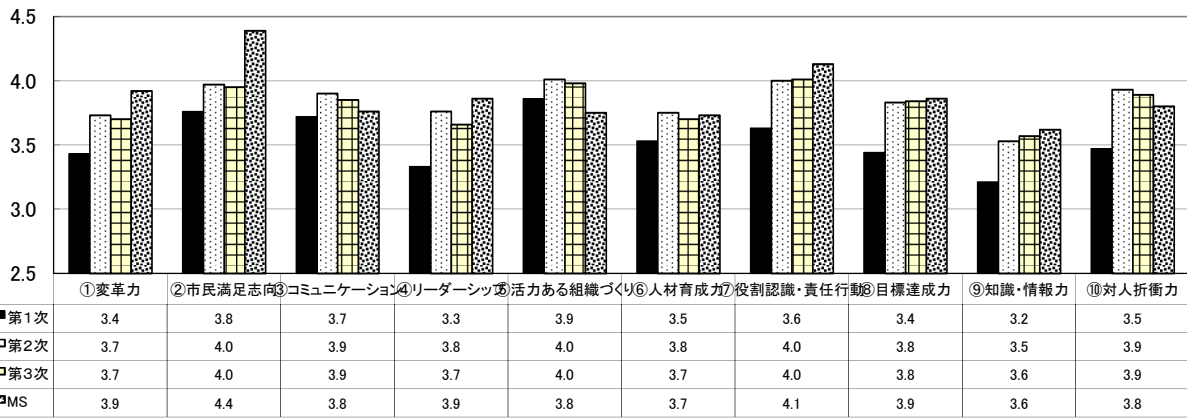


平成22年度 実績考課（目標管理）の考課点分布

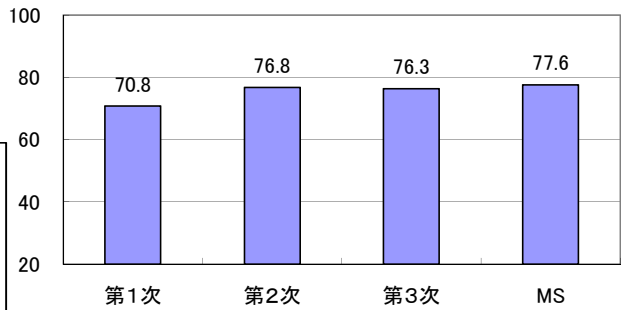


平成22年度 能力評価 課長級の評価結果集計

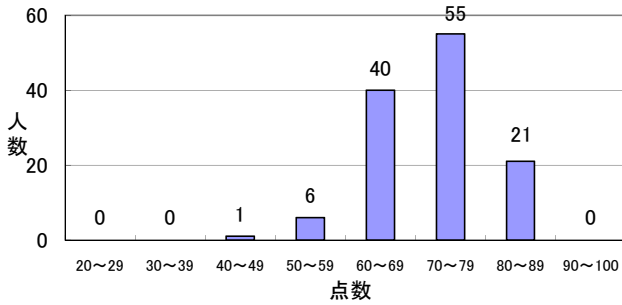
評価項目別平均点



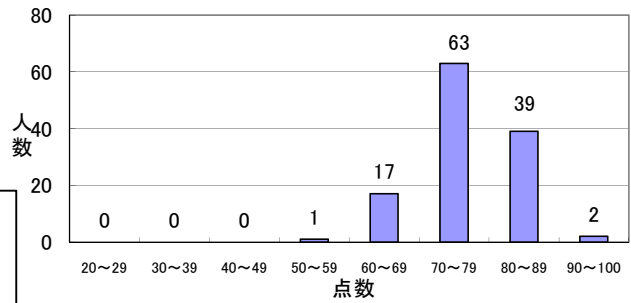
考課点平均



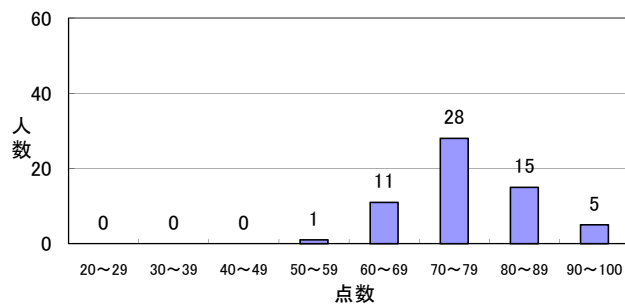
考課点人数分布(1次(本人)評価)



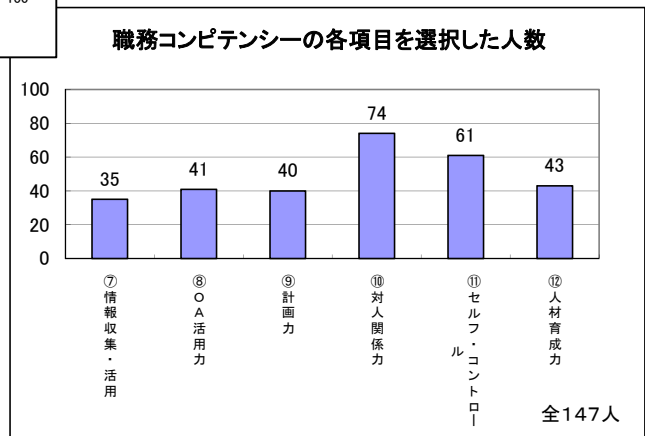
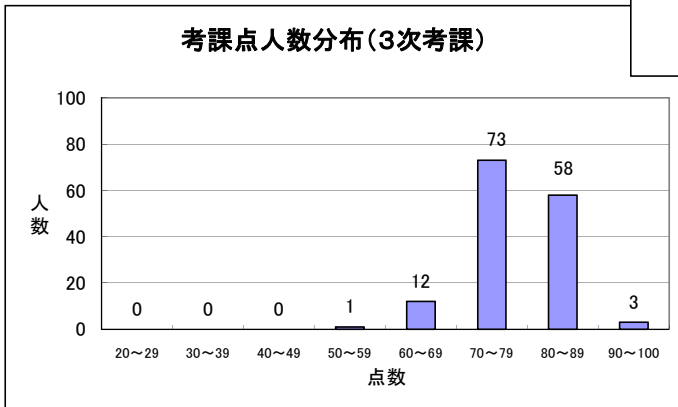
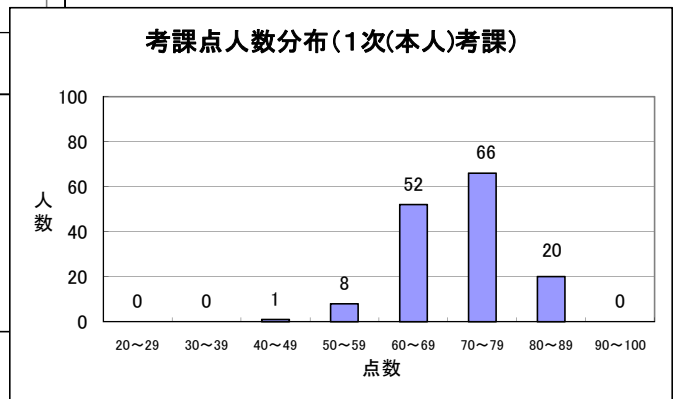
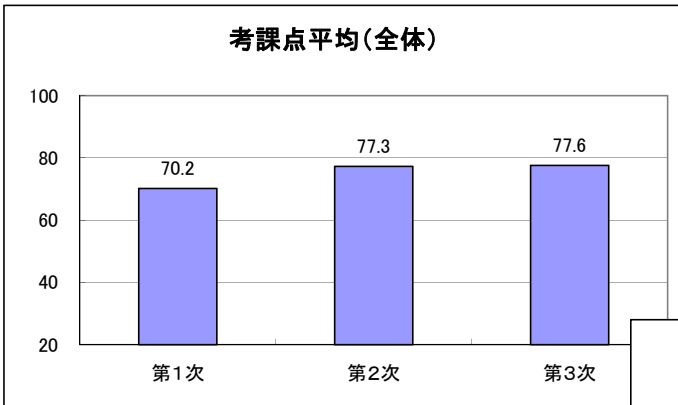
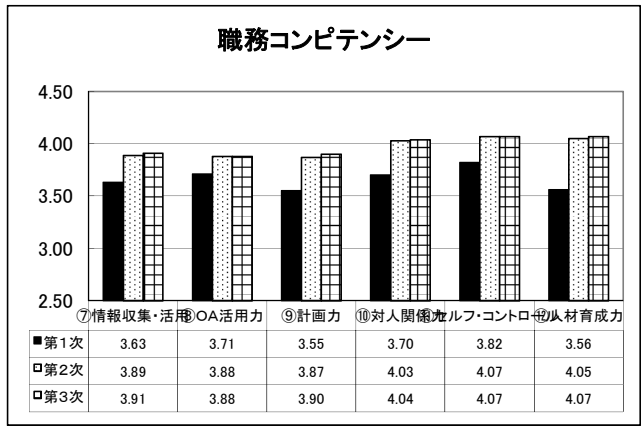
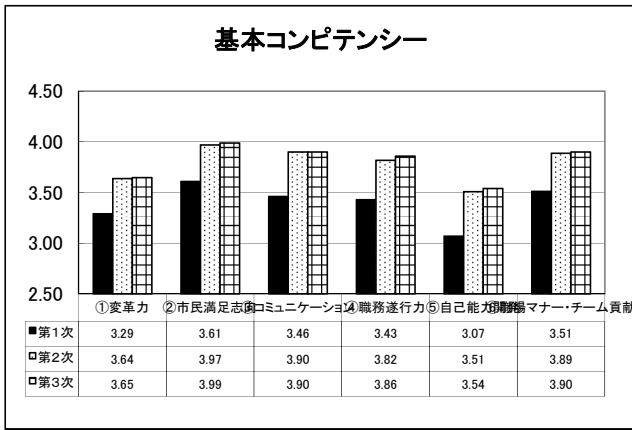
考課点人数分布(3次評価)



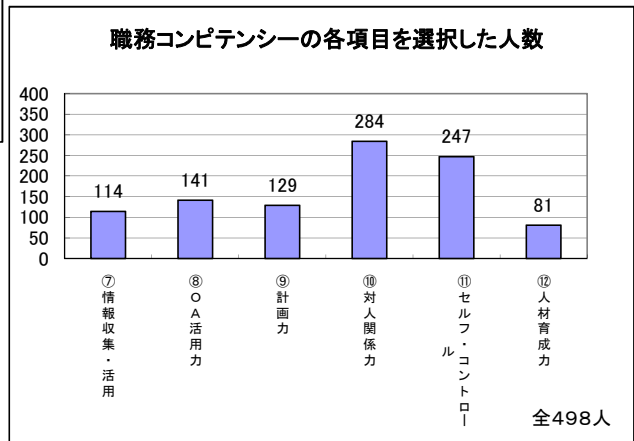
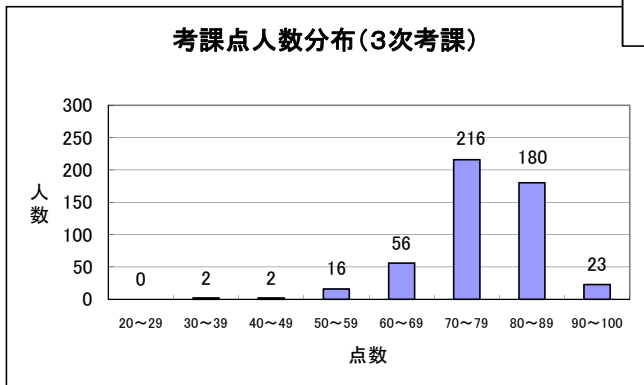
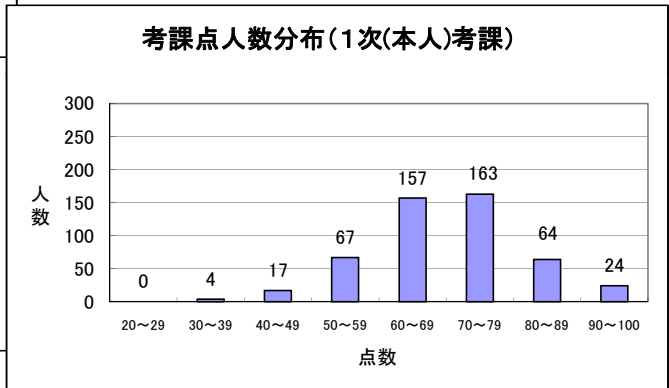
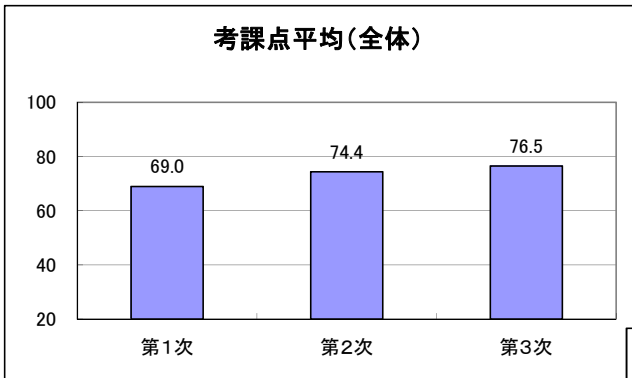
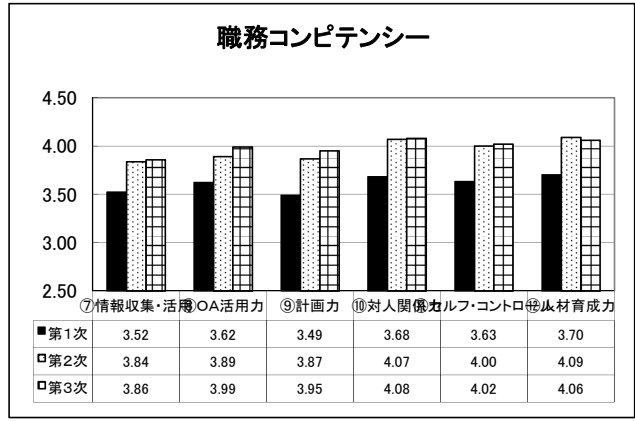
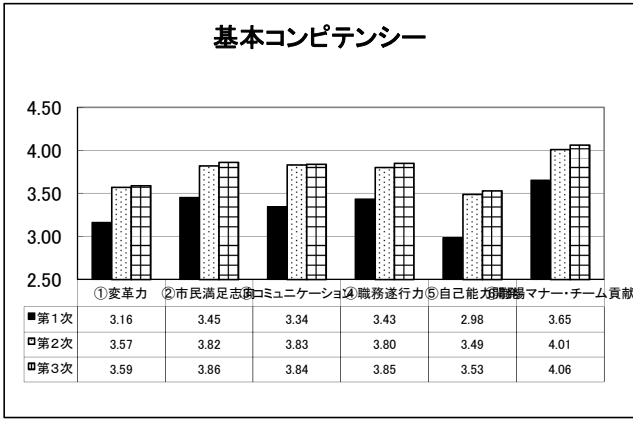
マネジメントサポート



平成22年度 能力考課 担当長・主幹・担当長(主査)の考課結果集計



平成22年度 能力考課 主査・一般職の考課結果集計



(平成 23 年度資料)

平成 22 年度

人事考課の考課結果

(保育所職場)

(内容)

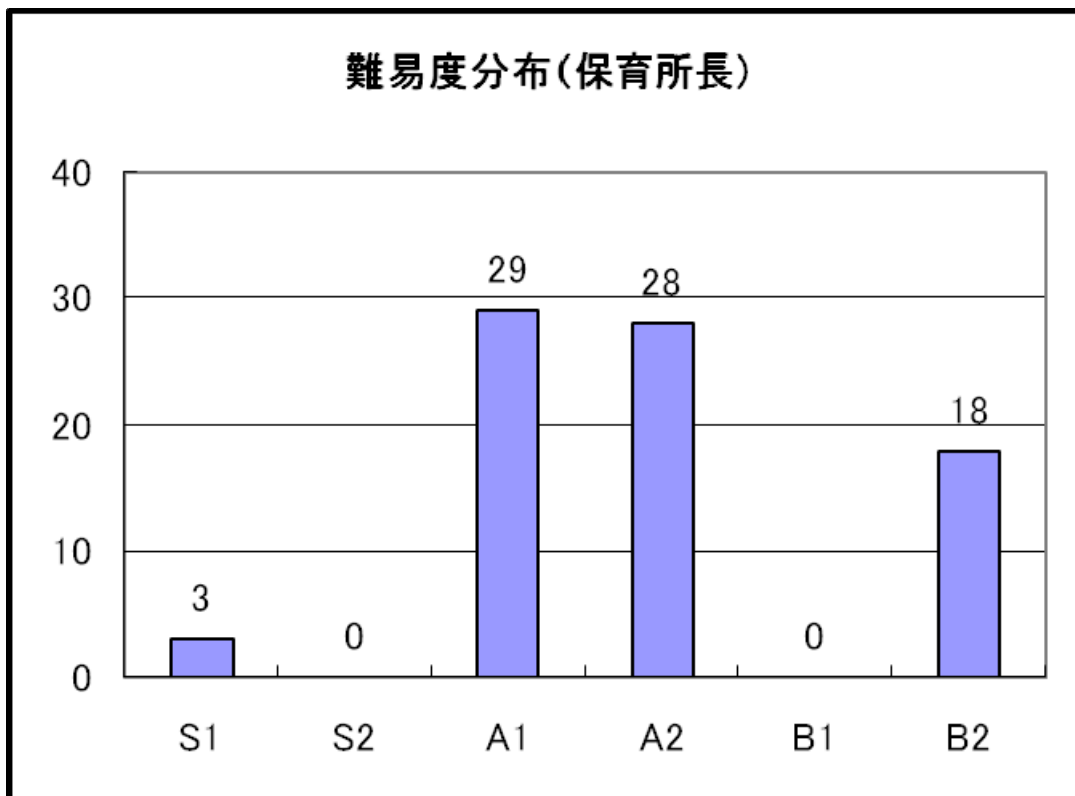
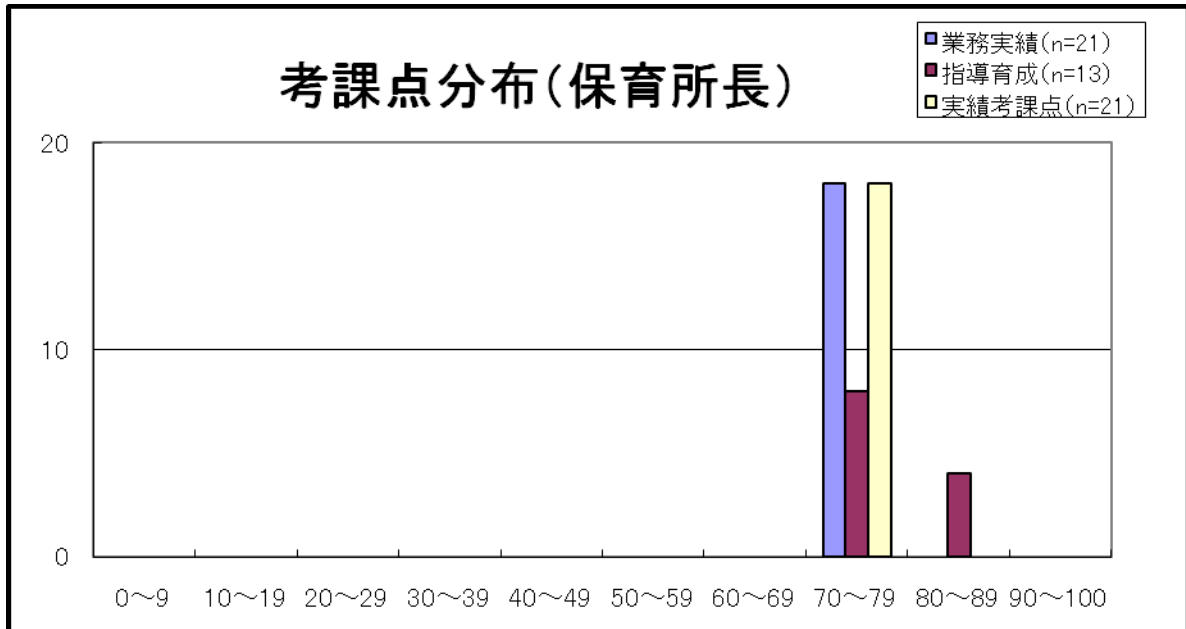
	(ページ)
1. 実績考課 (目標管理) の結果	
実績考課 (目標管理) の考課点及び難易度分布	1
2. 能力考課の結果	
保育所長の能力考課結果 (マネジメント・サポート含む)	2
保育所長代理、主査、一般職の能力考課結果	3

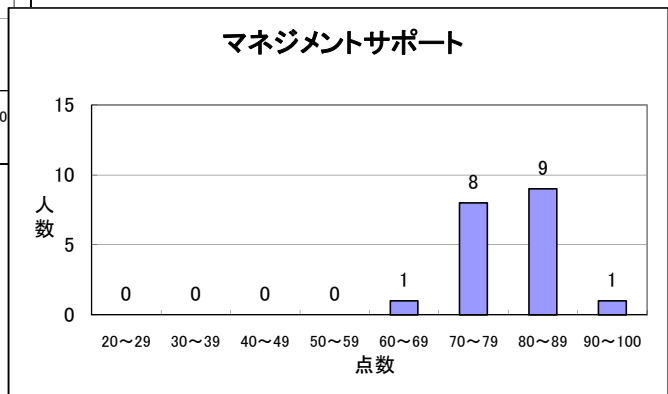
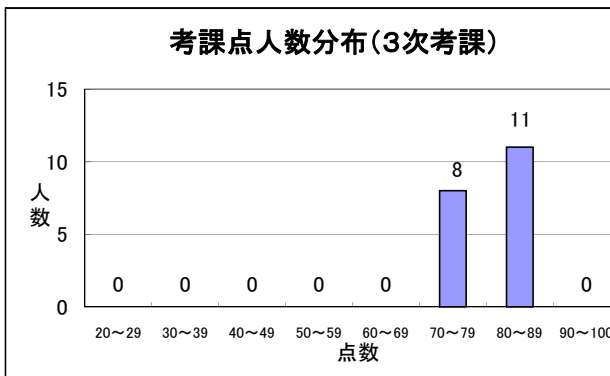
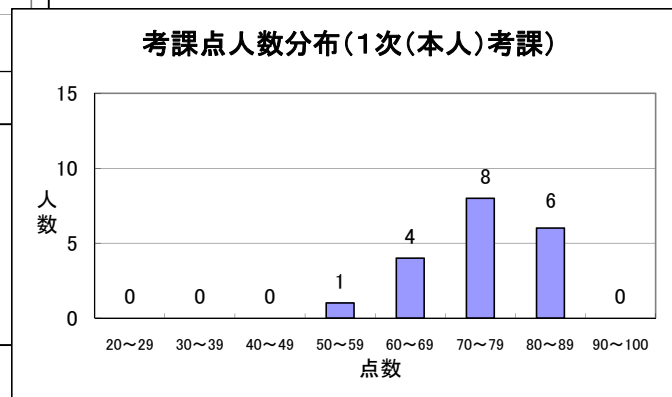
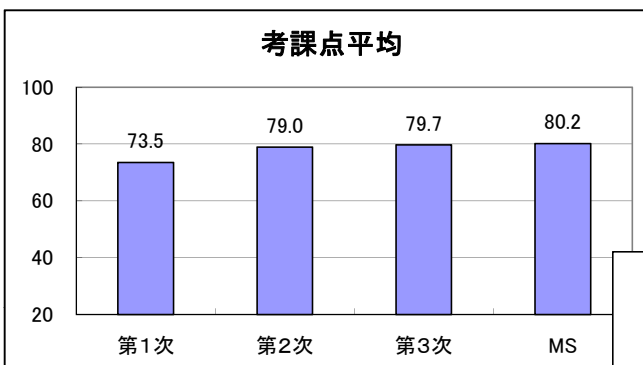
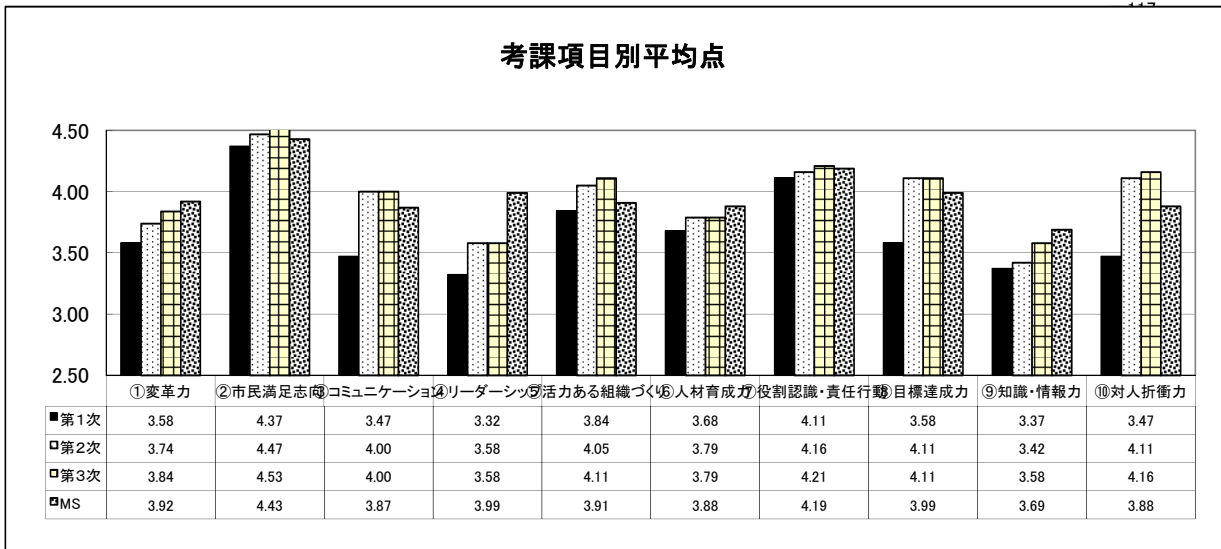
岸和田市 市長公室 人事課

平成 22 年度 実績考課（目標管理）の考課点分布

階級	区分	平均点
保育所長	業務実績	74.56
	指導育成	76.08
	実績考課点	74.76

保育所長の実績考課（目標管理）の難易度分布





平成22年度 保育所長代理、主査・一般職の能力考課結果

