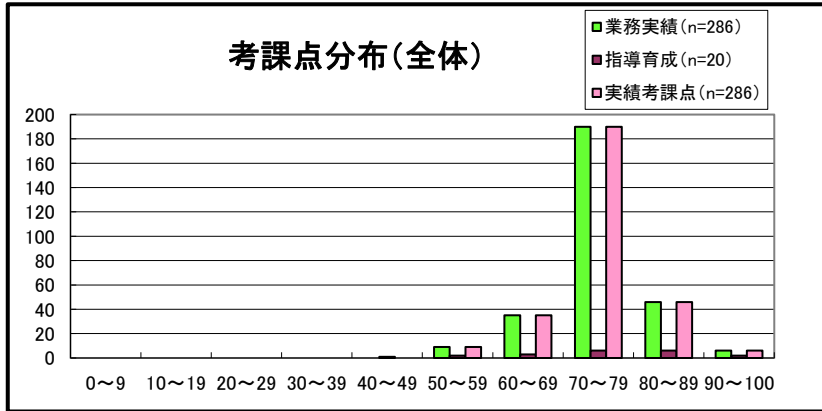


令和4年度

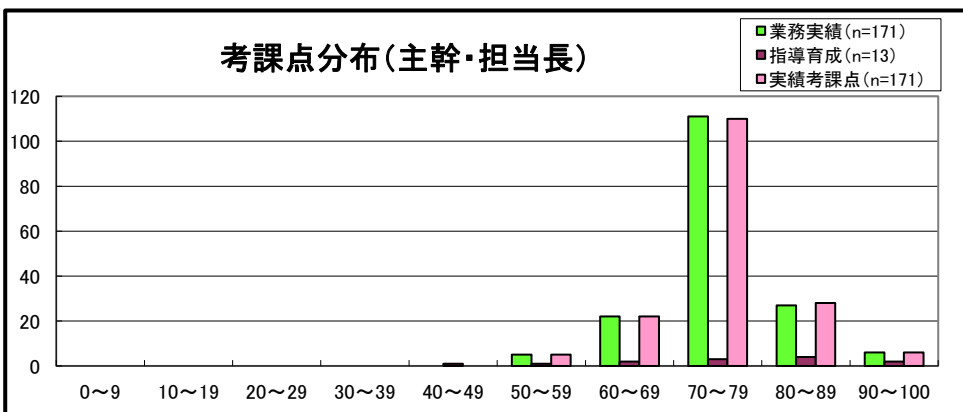
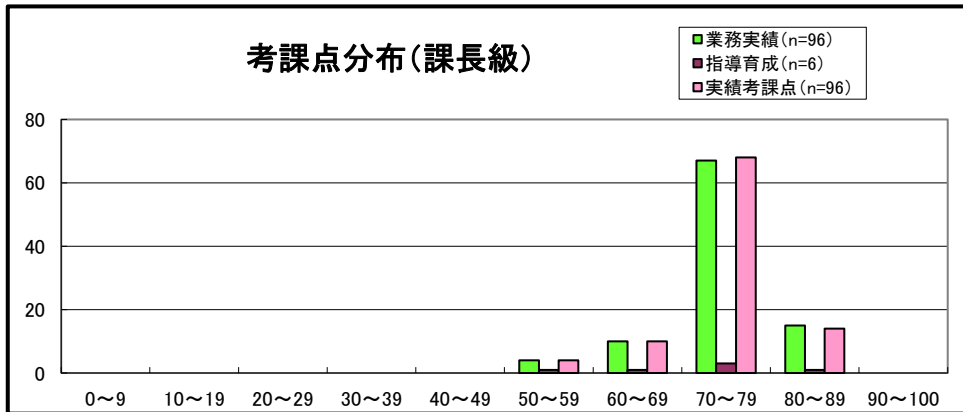
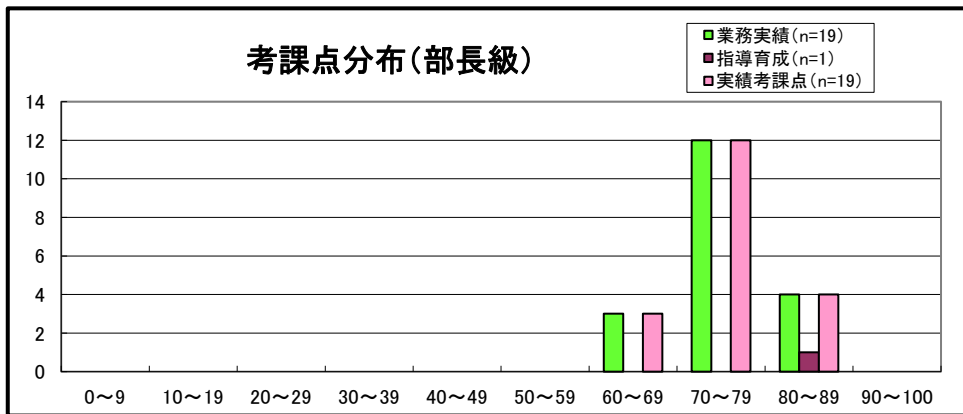
人事考課の考課結果

1. 実績考課（目標管理）の結果	(ページ)
実績考課（目標管理）の考課点分布	1
実績考課（目標管理）の難易度分布	2
部別の難易度分布	3～4
2. 能力考課の結果	
課長級職員的能力考課結果（マネジメント・サポート含む）	5
主幹・担当長的能力考課結果	6
主査・一般職的能力考課結果	7
【 保育所職場 】	
3. 実績考課（目標管理）の結果	
実績考課（目標管理）の考課点及び難易度分布	8
4. 能力考課の結果	
保育所長の能力考課結果（マネジメント・サポート含む）	9
保育所長代理、主査、一般職の能力考課結果	10

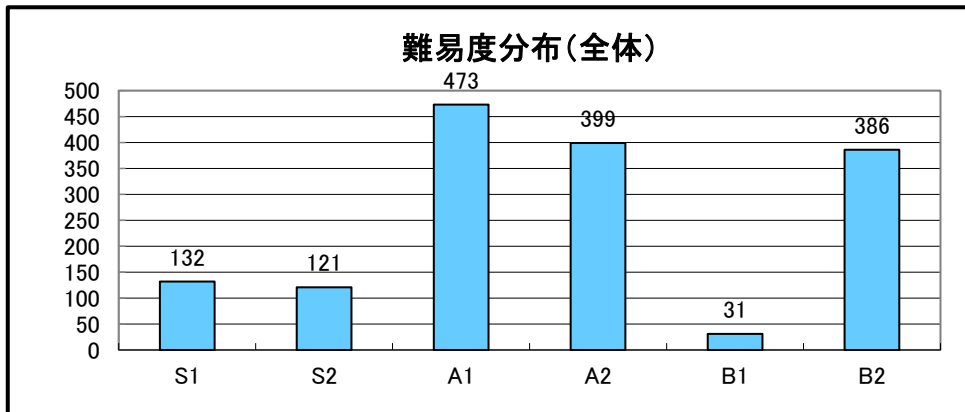
令和4年度 実績考課(目標管理)の考課点分布



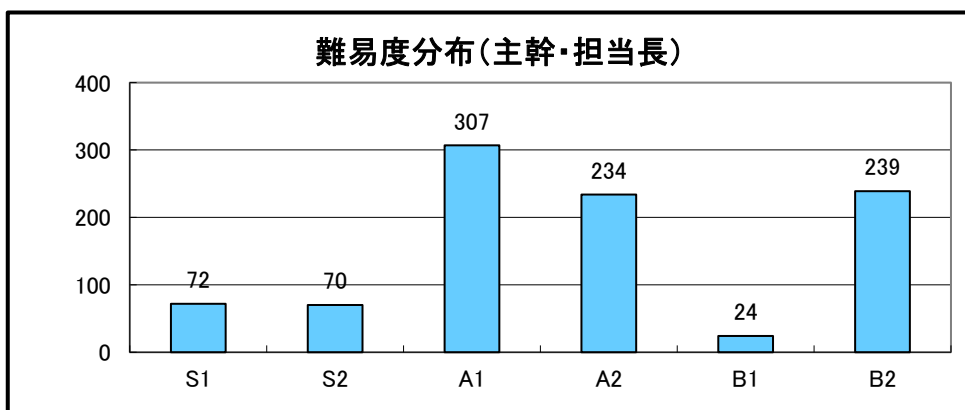
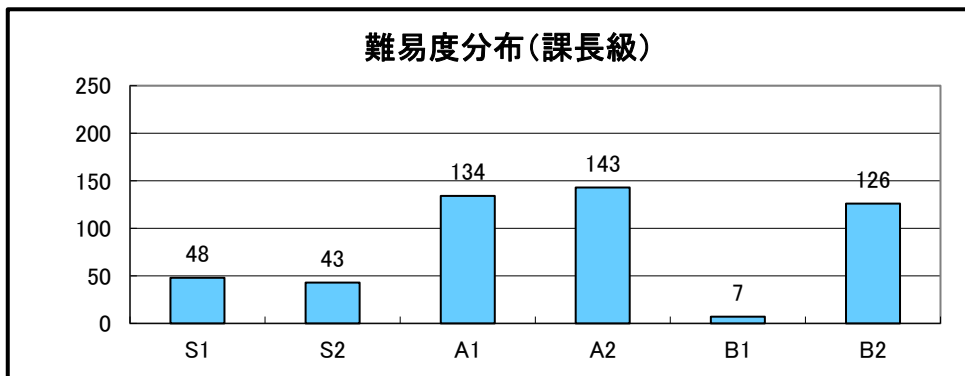
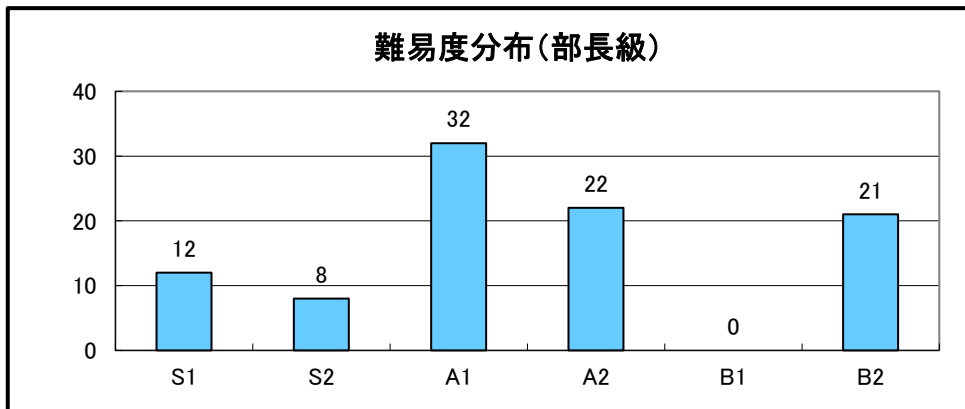
階級	区分	平均点
部長級	業務実績	75.89
	指導育成	80.00
	実績考課点	75.91
課長級	業務実績	68.94
	指導育成	72.33
	実績考課点	68.88
主幹・担当長	業務実績	65.85
	指導育成	73.15
	実績考課点	65.87



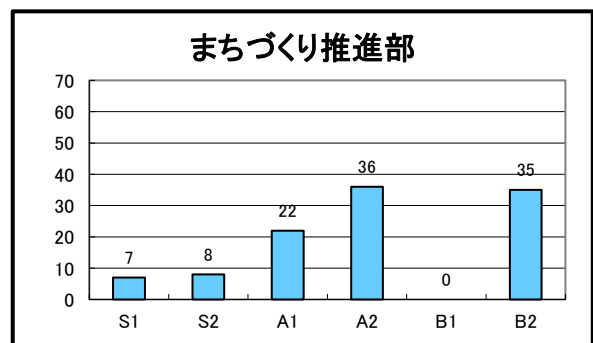
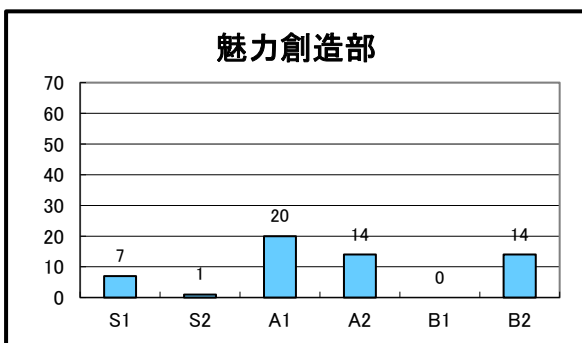
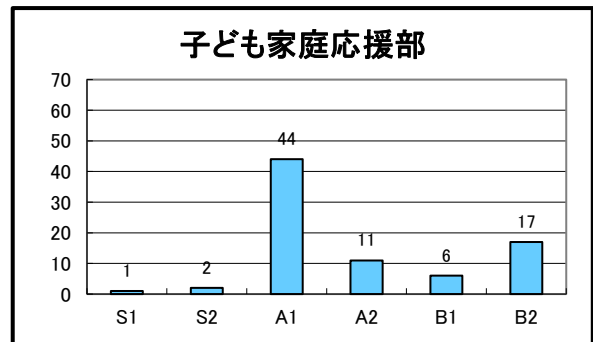
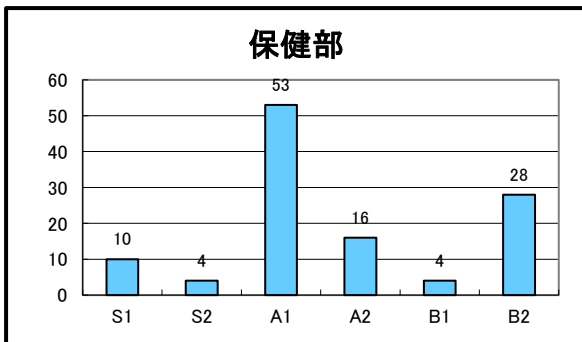
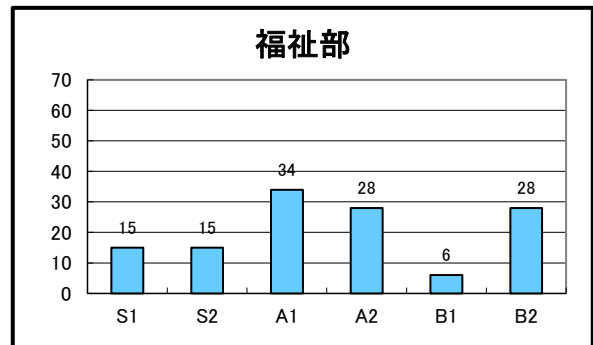
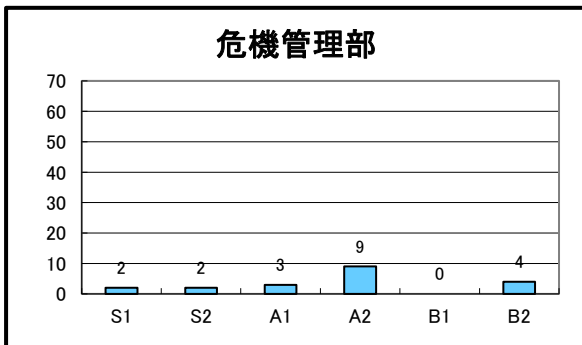
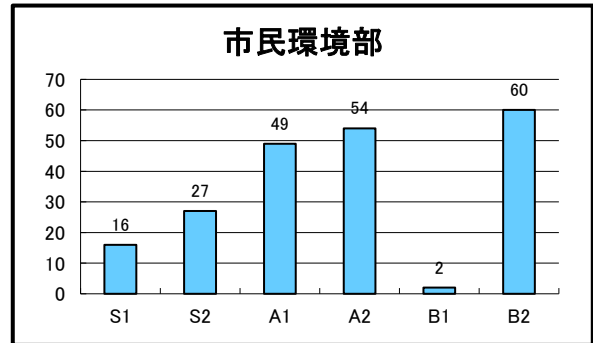
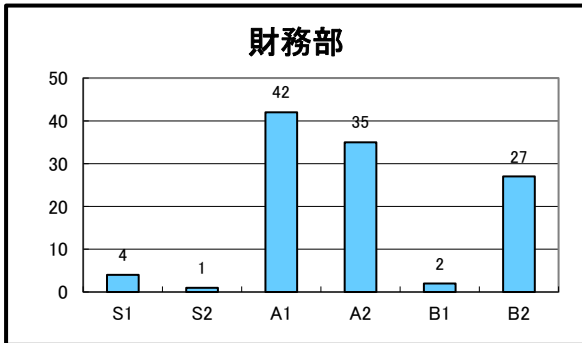
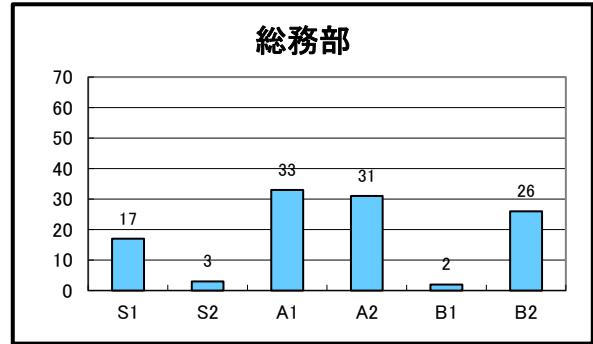
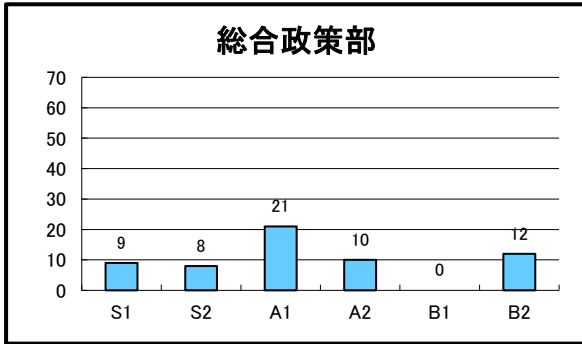
実績考課(目標管理)の難易度分布

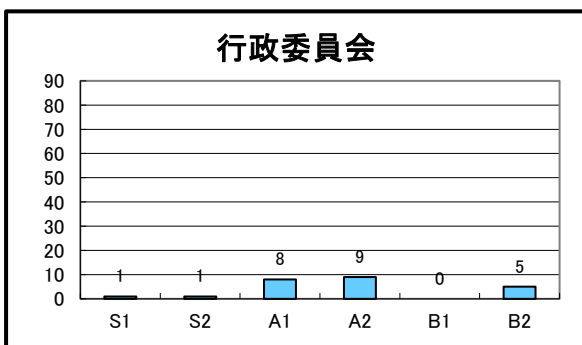
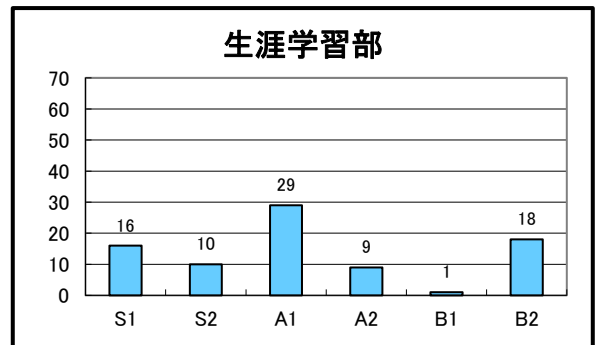
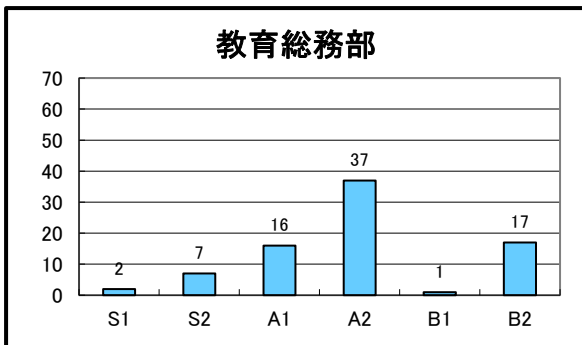
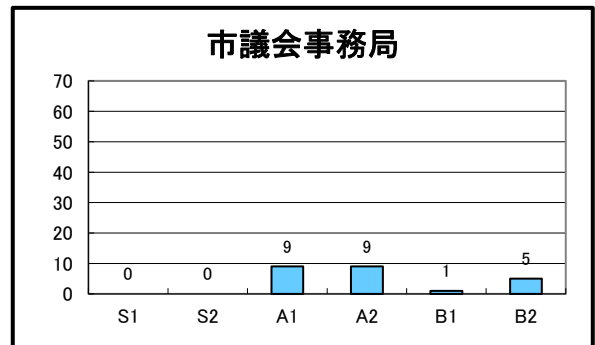
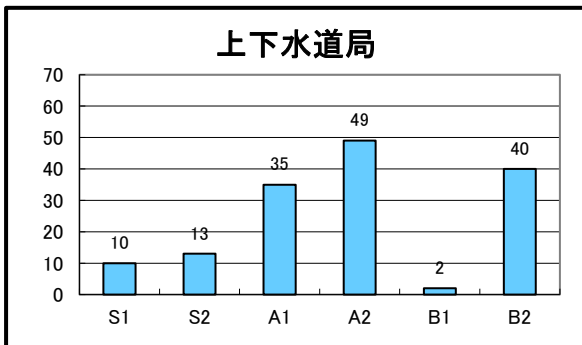
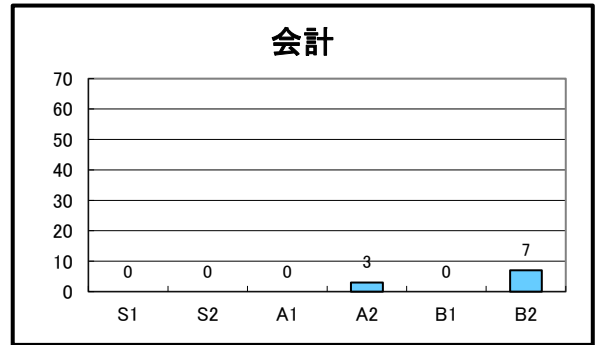
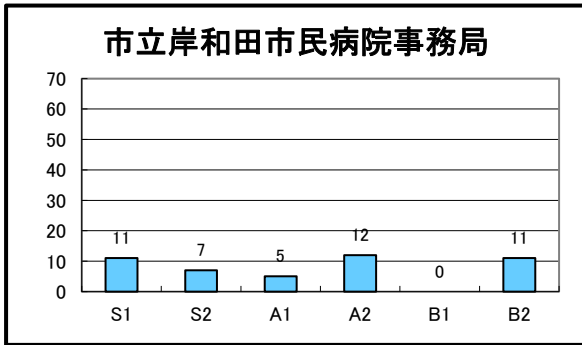
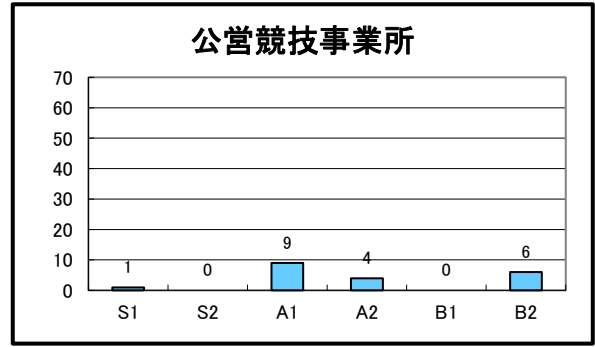
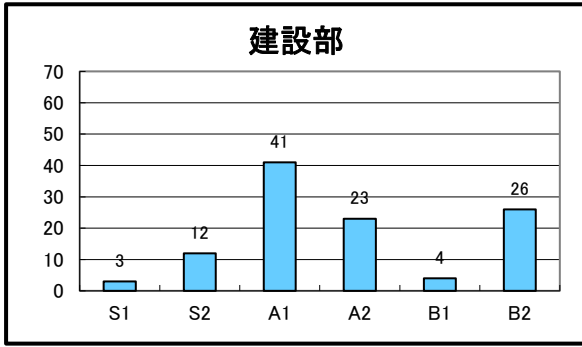


職階別の難易度分布



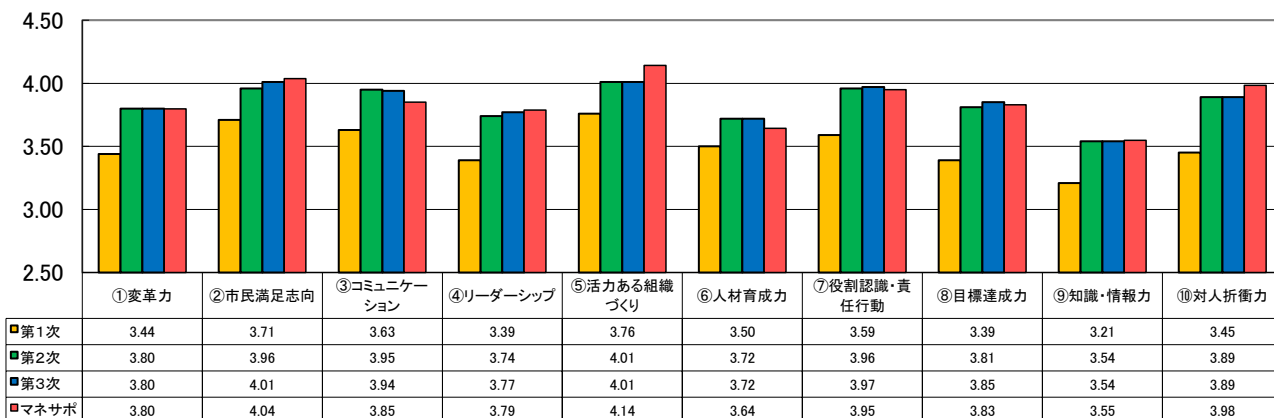
部別の難易度分布



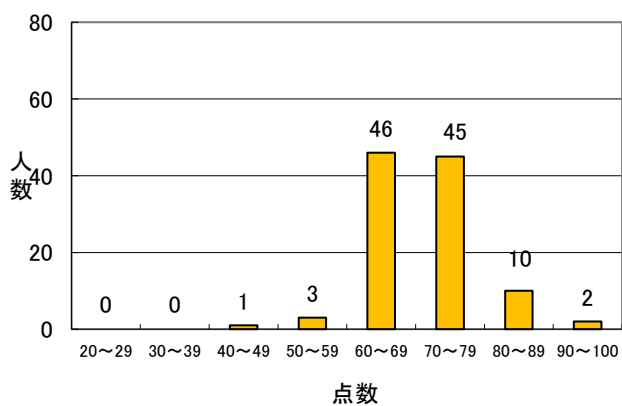


令和4年度 能力考課 課長級の考課結果集計

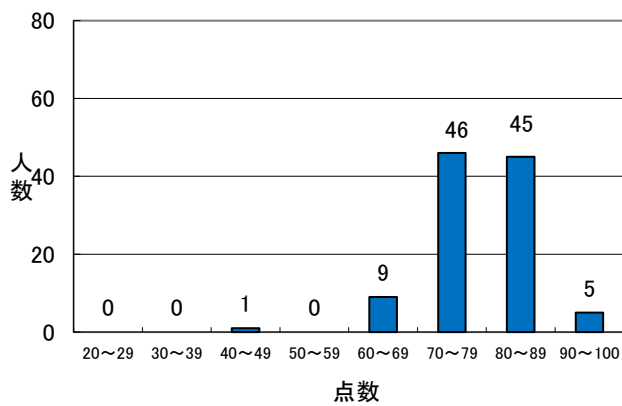
考課項目別平均点



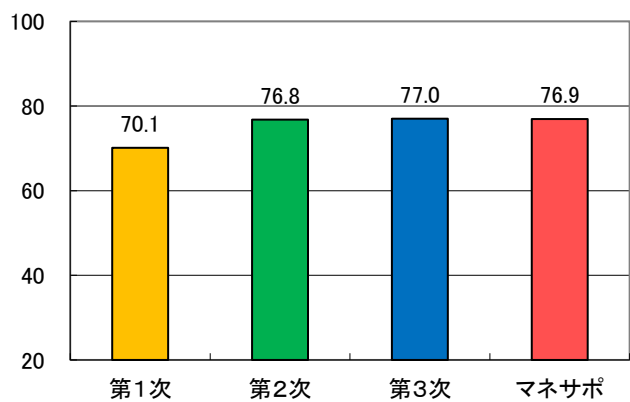
考課点人数分布(1次(本人)考課)



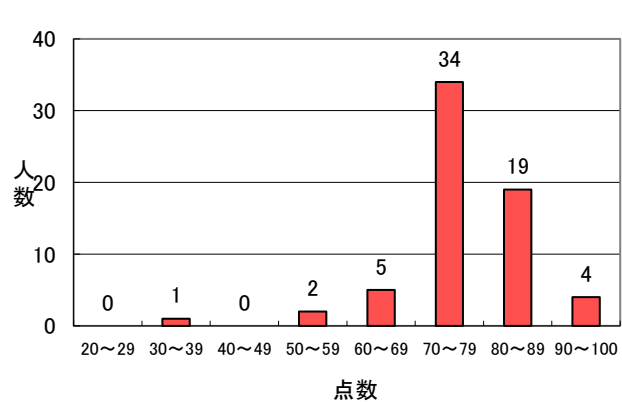
考課点人数分布(3次考課)



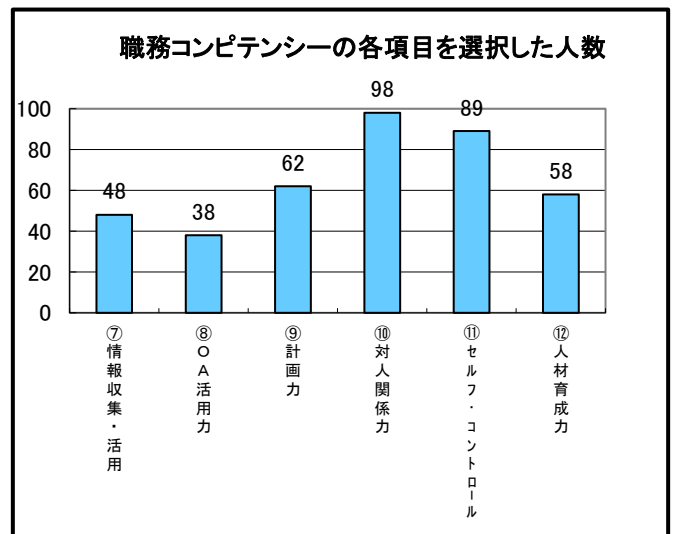
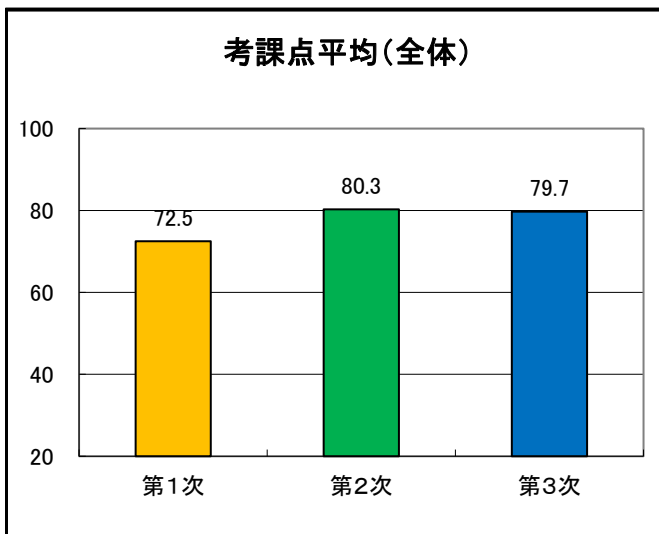
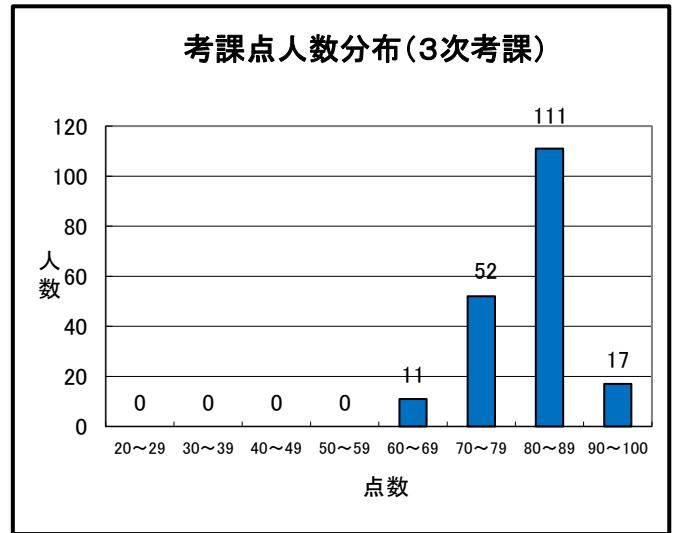
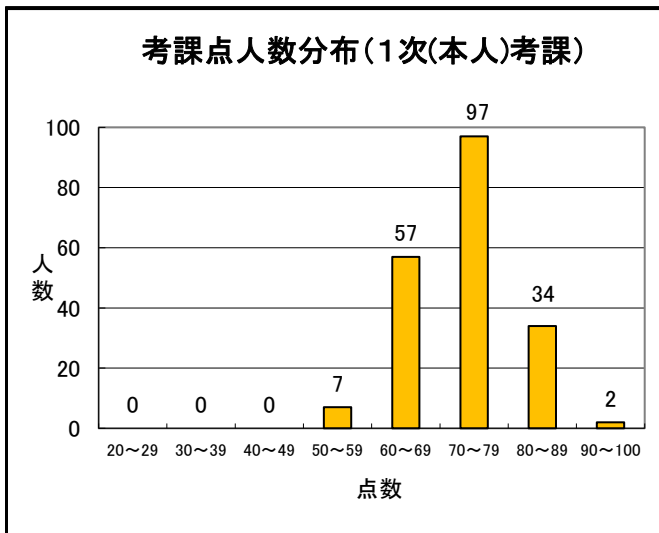
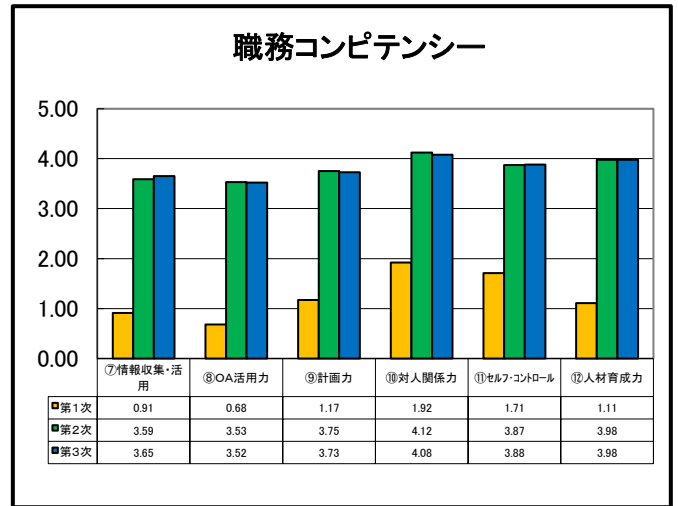
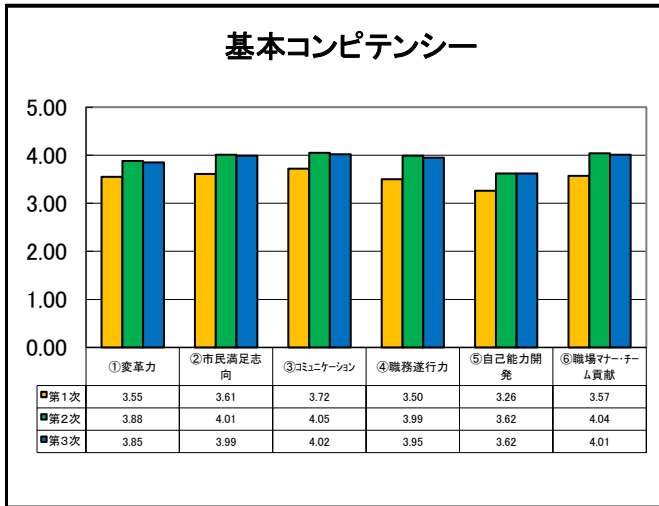
考課点平均



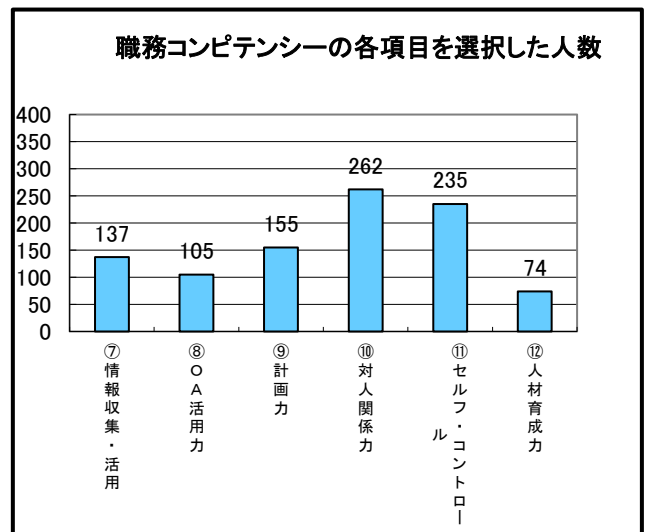
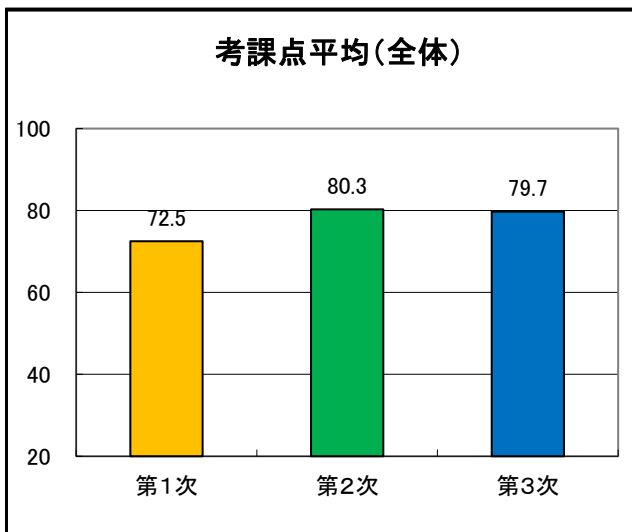
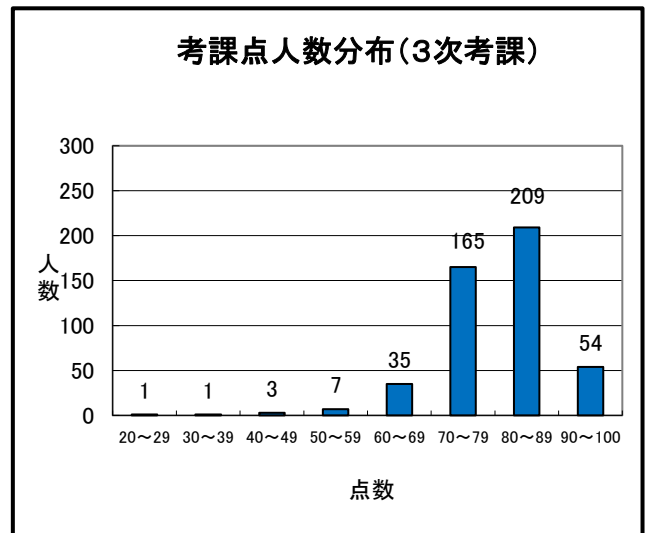
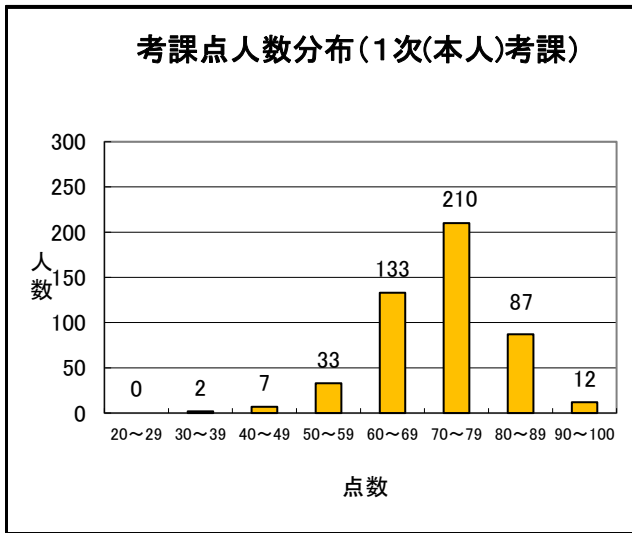
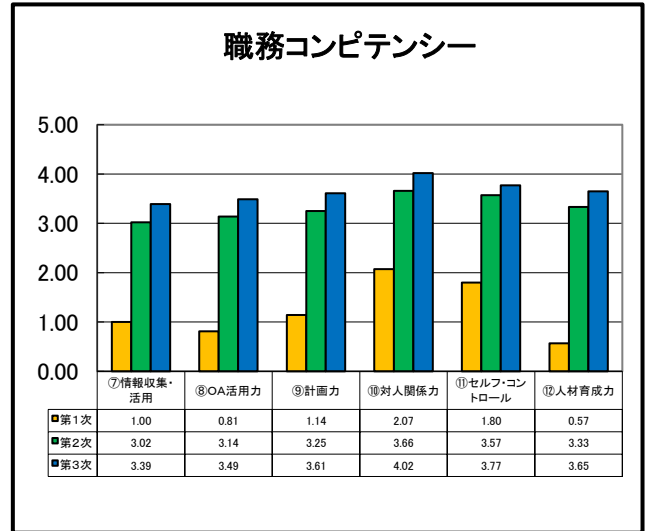
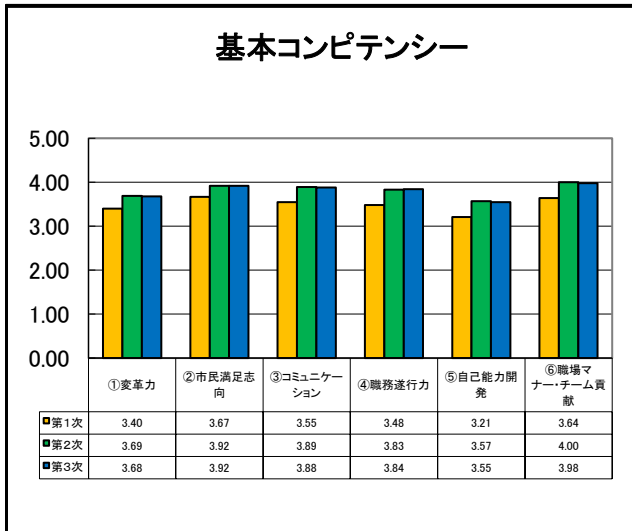
マネジメントサポート



令和4年度 能力考課 主幹・担当長の考課結果集計

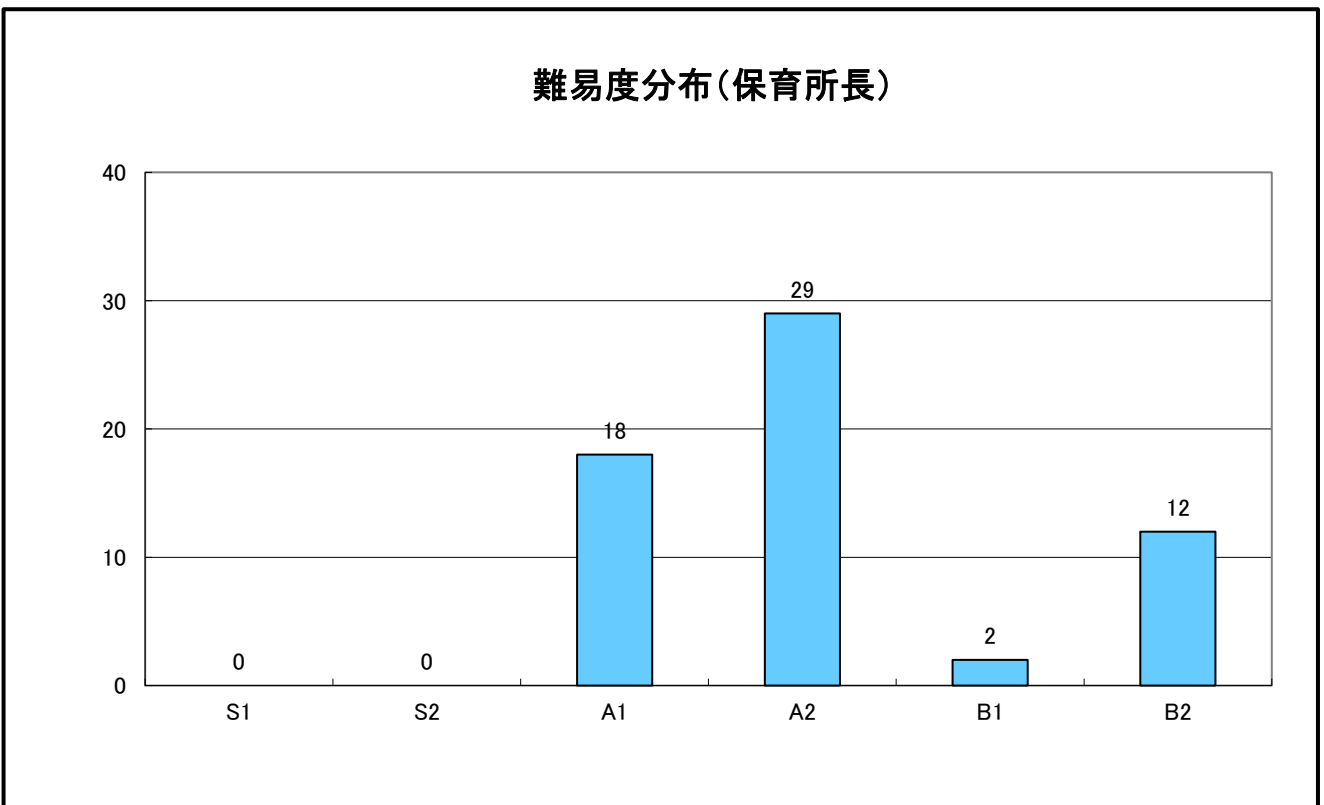
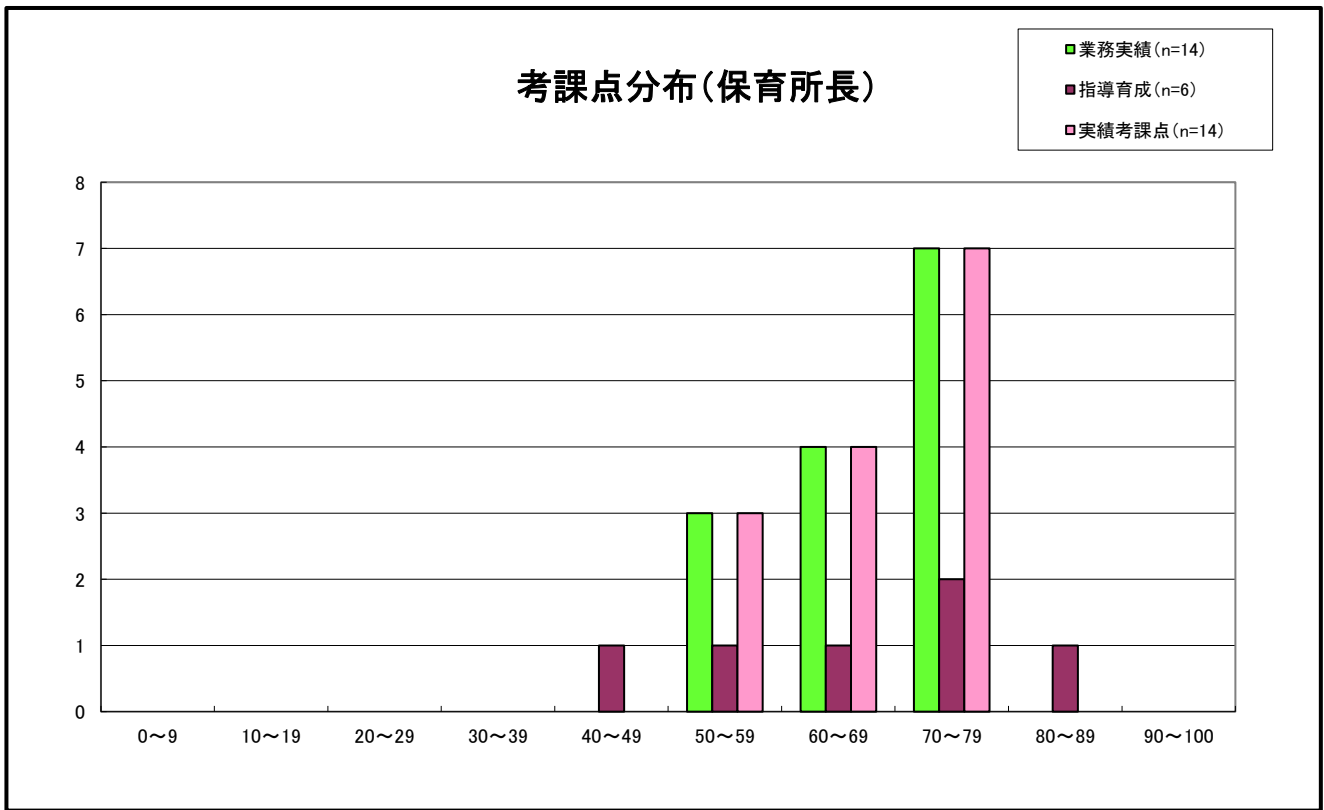


令和4年度 能力考課 主査・一般職の考課結果集計



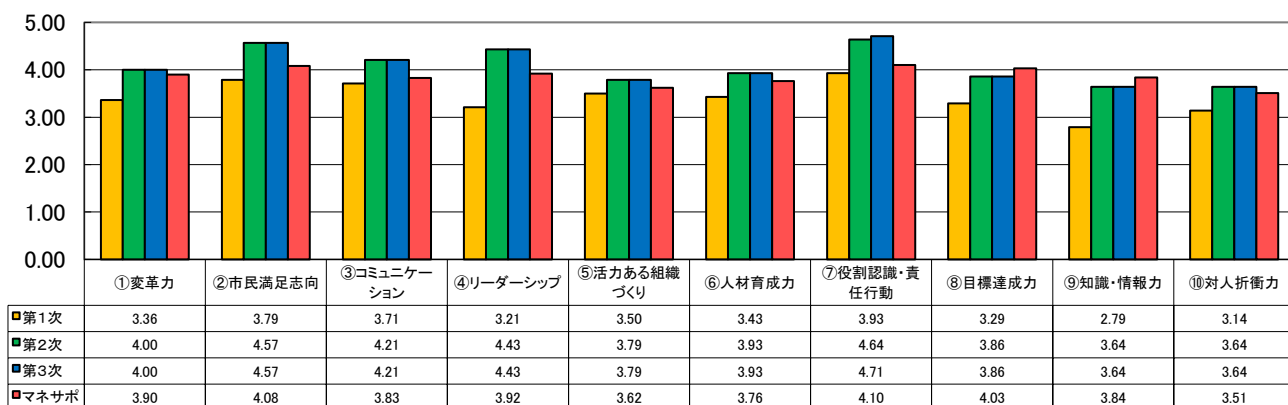
令和4年度 保育所長の実績考課(目標管理)の考課点分布

階級	区分	平均点
保育所長	業務実績	67.43
	指導育成	64.33
	実績考課点	67.26

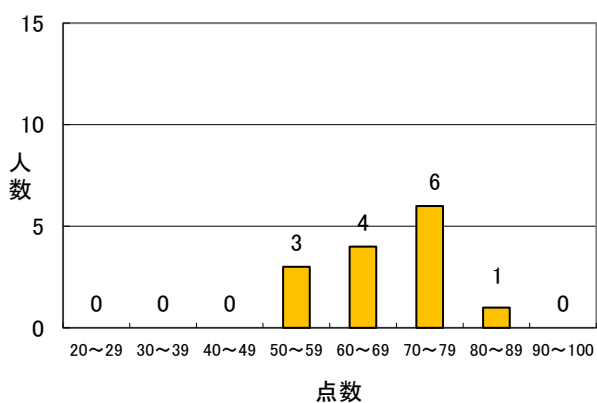


令和4年度 能力考課 保育所長の考課結果集計

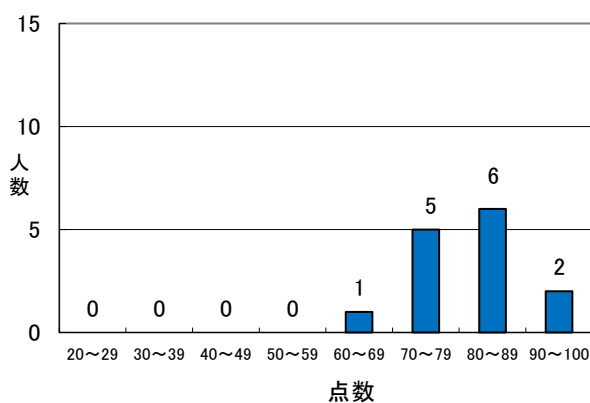
考課項目別平均点



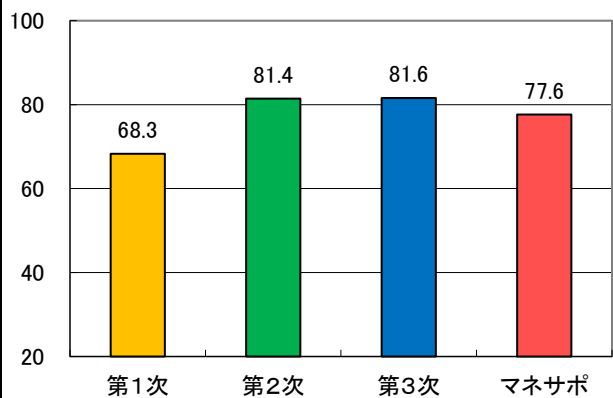
考課点人数分布(1次(本人)考課)



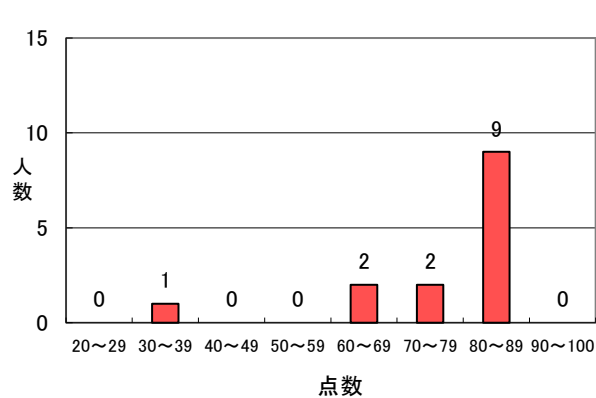
考課点人数分布(3次考課)



考課点平均



マネジメントサポート



令和4年度 保育所長代理、主査・一般職の能力考課結果

